

Anti-Optineurin Rabbit antibody



Catalog Number: 168005

Product name

Rabbit IgG

Anti-Optineurin Rabbit antibody

Applications

Specificity

WB, IHC-P, FC

Human

Dilutions

Antibody description

WB: 1/1000

Optineurin Rabbit monoclonal antibody

IHC: 1/50

Preparation

FC: 1/20

Antigen: Recombinant protein of human Optineurin

Validations

Formulation

50nM Tris-Glycine(pH 7.4), 0.15M NaCl, 40%Glycerol, 0.01% sodium azide and 0.05% BSA

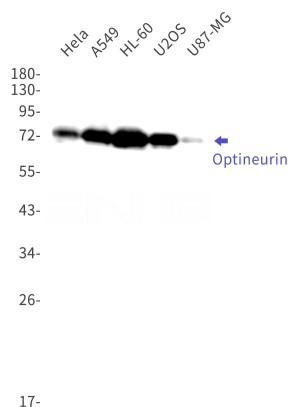
Storage

Store at 4°C short term. Store at -20°C long term. Avoid freeze / thaw cycle.

Clonality

Monoclonal

Ig Type



Western blot detection of Optineurin in HeLa, A549, HL-60, U2OS, U87-MG cell lysates using Optineurin Rabbit mAb (1:1000 diluted). Predicted band size: 66 kDa. Observed band size: 75 kDa.