

# KIF1C antibody

Catalog Number: 112005

## Product name

KIF1C antibody

IP: 1:200-1:1000

IHC: 1:20-1:200

## Specificity

Human, Mouse, Rat; other species not tested.

## Antibody description

KIF1C Rabbit Polyclonal antibody. Positive IP detected in mouse heart tissue. Positive WB detected in mouse heart tissue. Positive IHC detected in human gliomas tissue. Observed molecular weight by Western-blot: 135-140 kDa

## Preparation

This antibody was obtained by immunization of KIF1C recombinant protein (Accession Number: XM\_005256424). Purification method: Antigen affinity purified.

## Formulation

PBS with 0.02% sodium azide and 50% glycerol pH 7.3.

## Storage

Store at -20°C. DO NOT ALIQUOT

## Clonality

Polyclonal

## Ig Type

Rabbit IgG

## Applications

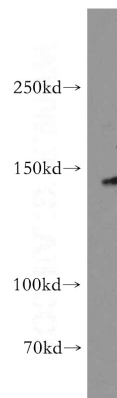
ELISA, WB, IHC, IP

## Dilutions

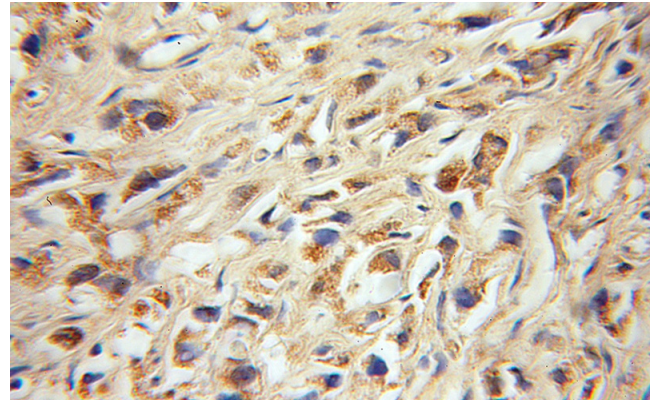
Recommended Dilution:

WB: 1:500-1:5000

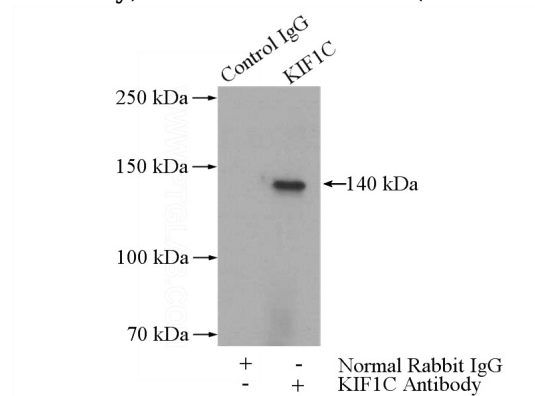
## Validations



mouse heart tissue were subjected to SDS PAGE followed by western blot with Catalog No:112005(KIF1C antibody) at dilution of 1:500



Immunohistochemical of paraffin-embedded human gliomas using Catalog No:112005(KIF1C antibody) at dilution of 1:100 (under 10x lens)



IP Result of anti-KIF1C (IP:Catalog No:112005, 5ug; Detection:Catalog No:112005 1:300) with

# KIF1C antibody



Catalog Number: 112005

---

mouse heart tissue lysate 4000ug.