

Mouse CLEC10A/MGL1/CD301 (Fc Tag) recombinant protein



Catalog Number: 502005

General Information

Protein Construction

A DNA sequence encoding the extracellular domain of mouse CLEC10A (NP_001191181.1) (Gln 58-Ser 305) was fused with the Fc region of human IgG1 at the N-terminus.

Organism

Mouse

Expression Host

Human Cells

QC Testing

Purity

> 86 % as determined by SDS-PAGE

Endotoxin

< 1.0 EU per μg of the protein as determined by the LAL method

Stability

Samples are stable for up to twelve months from date of receipt at -70°C

Predicted N terminal

Glu

Molecular Mass

The recombinant mouse CLEC10A/Fc is a disulfide-linked homodimer. The reduced monomer comprises 508 amino acids and predicts

a molecular mass of 56.7 kDa. The apparent molecular mass of the monomer is approximately 58 kDa in SDS-PAGE under reducing conditions.

Formulation

Lyophilized from sterile PBS, pH 7.4

1. 5 % trehalose and mannitol are added as protectants before lyophilization.

2. Please contact us for any concerns or special requirements.

Usage Guide

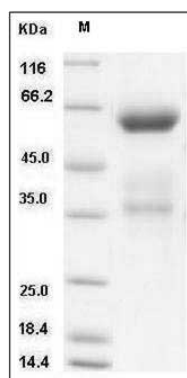
Storage

Store it under sterile conditions at -20°C to -80°C . It is recommended that the protein be aliquoted for optimal storage. Avoid repeated freeze-thaw cycles.

Reconstitution

Adding sterile water, prepare a stock solution of 0.25 mg/ml. Concentration is measured by UV-Vis.

SDS-PAGE



Mouse CLEC10A / MGL1 / CD301 Protein (Fc Tag)
SDS-PAGE