

Anti-MLH1 Rabbit antibody



Catalog Number: 167794

Product name

Anti-MLH1 Rabbit antibody

Specificity

Human

Antibody description

MLH1 Rabbit monoclonal antibody

Preparation

Antigen: Recombinant protein of human MLH1

Formulation

50nM Tris-Glycine(pH 7.4), 0.15M NaCl,
40%Glycerol, 0.01% sodium azide and 0.05% BSA

Storage

Store at 4°C short term. Store at -20°C long term.
Avoid freeze / thaw cycle.

Clonality

Monoclonal

Ig Type

Rabbit IgG

Applications

IHC-P, ICC/IF, FC

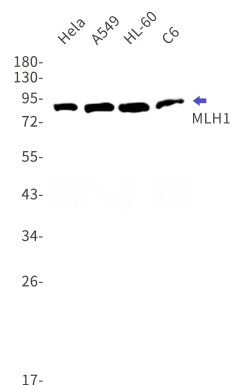
Dilutions

IHC: 1/50

ICC/IF: 1/50

FC: 1/20

Validations



Western blot detection of MLH1 in HeLa,A549,HL-60,U2OS cell lysates using MLH1 Rabbit mAb(1:1000 diluted).Predicted band size:85kDa.Observed band size:85kDa.