

RPA2 antibody

Catalog Number: 114794

Product name

RPA2 antibody

WB: 1:500-1:5000

IP: 1:500-1:5000

Specificity

Human, Mouse, Rat; other species not tested.

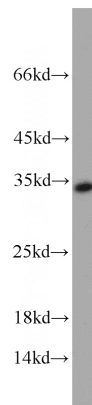
IHC: 1:20-1:200

IF: 1:20-1:200

Antibody description

RPA2 Rabbit Polyclonal antibody. Positive IP detected in mouse kidney tissue. Positive WB detected in A549 cells, HEK-293 cells, HeLa cells, mouse brain tissue, mouse kidney tissue, SH-SY5Y cells. Positive IF detected in HeLa cells. Positive IHC detected in human gliomas tissue. Observed molecular weight by Western-blot: 29-32 kDa

Validations



A549 cells were subjected to SDS PAGE followed by western blot with Catalog No:114794(RPA2 antibody) at dilution of 1:1000

Preparation

This antibody was obtained by immunization of RPA2 recombinant protein (Accession Number: NM_002946). Purification method: Antigen affinity purified.

Formulation

PBS with 0.1% sodium azide and 50% glycerol pH 7.3.

Storage

Store at -20°C. DO NOT ALIQUOT

Clonality

Polyclonal

Ig Type

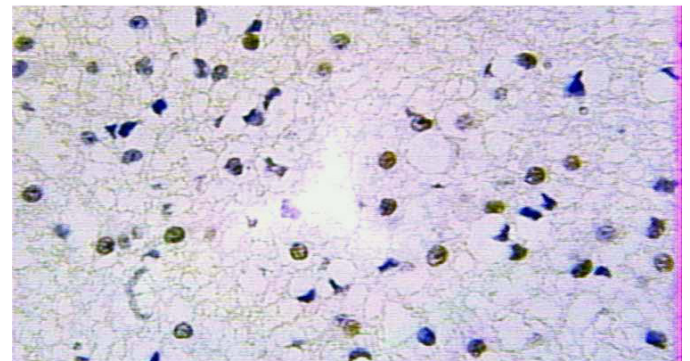
Rabbit IgG

Applications

ELISA, WB, IHC, IP, IF

Dilutions

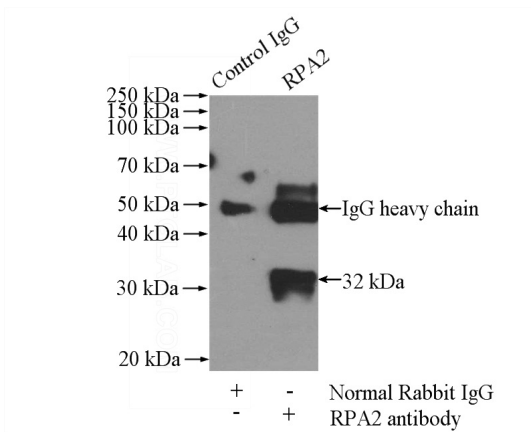
Recommended Dilution:



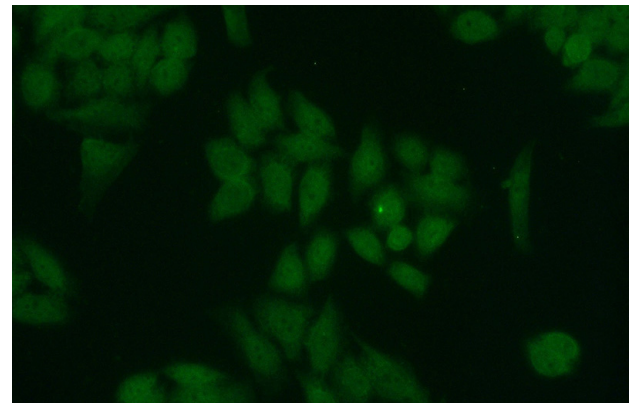
Immunohistochemical of paraffin-embedded human gliomas using Catalog No:114794(RPA2 antibody) at dilution of 1:100 (under 25x lens)

RPA2 antibody

Catalog Number: 114794



IP Result of anti-RPA2 (IP:Catalog No:114794, 4ug; Detection:Catalog No:114794 1:1000) with mouse kidney tissue lysate 4000ug.



Immunofluorescent analysis of HeLa cells using Catalog No:114794(RPA2 Antibody) at dilution of 1:50 and Alexa Fluor 488-conjugated AffiniPure Goat Anti-Rabbit IgG(H+L)