

## General Information

### Gene Name Synonym

CNDP dipeptidase 1; Carnosine dipeptidase 1; Glutamate carboxypeptidase-like protein 2; Serum carnosinase

### Protein Construction

A DNA sequence encoding the mature form of human CNDP1 (NP\_116038.4) (Ser27-His507) was fused with a polyhistidine tag at the C-terminus.

### Organism

Human

### Expression Host

Human Cells

## QC Testing

### Activity

Measured by its ability to cleave carnosine ( $\beta$ AlaL-His) in a twostep assay.

The specific activity is  $> 250$  pmoles/min/ $\mu$ g.

### Purity

$> 90$  % as determined by SDS-PAGE and SEC-HPLC Analysis.

### Endotoxin

$< 1.0$  EU per  $\mu$ g of the protein as determined by the LAL method

### Stability

Samples are stable for up to twelve months from date of receipt at  $-70^{\circ}\text{C}$

### Predicted N terminal

Ser 27

### Molecular Mass

The recombinant human CNDP1 consists of 492 amino acids and has a calculated molecular mass of 55.3 kDa. As a result of glycosylation, the protein migrates as an approximately 60-65 kDa band in SDS-PAGE under reducing conditions.

### Formulation

Lyophilized from sterile PBS, pH 7.4

1. 5 % trehalose and mannitol are added as protectants before lyophilization.

2. Please contact us for any concerns or special requirements.

## Usage Guide

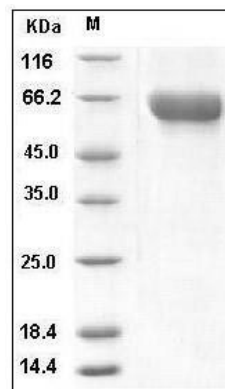
### Storage

Store it under sterile conditions at  $-20^{\circ}\text{C}$  to  $-80^{\circ}\text{C}$ . It is recommended that the protein be aliquoted for optimal storage. Avoid repeated freeze-thaw cycles.

### Reconstitution

Adding sterile water, prepare a stock solution of 0.25 mg/ml. Concentration is measured by UV-Vis.

### SDS-PAGE



Human CNDP1 Protein (His Tag) SDS-PAGE