

Anti-Ecm1 antibody



Catalog Number: 175394

Product name

Anti-Ecm1 antibody

Specificity

Human, Mouse, Rat, Dog, Cow

Antibody description

Rabbit polyclonal antibody to Ecm1

Preparation

This antigen of this antibody was klh conjugated synthetic peptide derived from human ecm1 488-567/567

Formulation

Liquid, 0.01M TBS(pH7.4) with 1% BSA, 0.03% Proclin300 and 50% Glycerol.

Storage

Store at -20°C for one year. Avoid repeated freeze/thaw cycles. The lyophilized antibody is stable at room temperature for at least one month and for greater than a year when kept at -20°C. When reconstituted in sterile pH 7.4 0.01M PBS or diluent of antibody the antibody is stable for at least two weeks at 2-4°C.

Clonality

Polyclonal

Ig Type

Rabbit IgG

Applications

WB, IHC-P

Dilutions

WB:1:500-2000

IHC-P:1:400-800

Validations

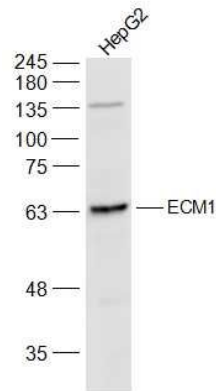
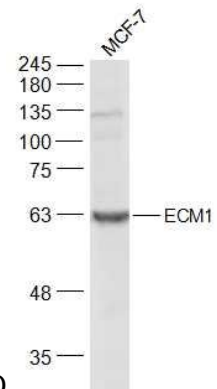
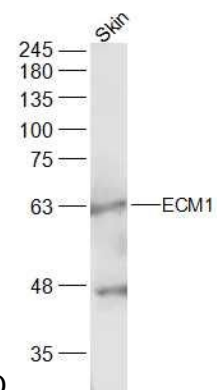


Fig1: Sample:; HepG2(Human) Cell Lysate at 30 ug; Primary: Anti-ECM1 at 1/300 dilution; Secondary: IRDye800CW Goat Anti-Rabbit IgG at 1/20000 dilution; Predicted band size: 59 kD;



Observed band size: 64 kD

Fig2: Sample:; MCF-7(Human) Cell Lysate at 30 ug; Primary: Anti-ECM1 at 1/300 dilution; Secondary: IRDye800CW Goat Anti-Rabbit IgG at 1/20000 dilution; Predicted band size: 59 kD;



Observed band size: 64 kD

Fig3: Sample:; Skin(Mouse) Lysate at 40 ug; Primary: Anti-ECM1 at 1/300 dilution; Secondary: IRDye800CW Goat Anti-Rabbit IgG at 1/20000

Anti-Ecm1 antibody



Catalog Number: 175394

dilution; Predicted band size: 59 kD; Observed

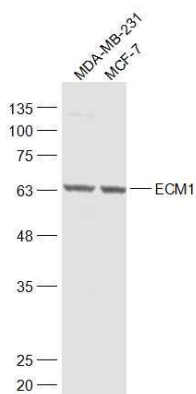


Fig4: Sample:; MDA-MB-231(Mouse) Cell Lysate at 30 ug; MCF-7(Human) Cell Lysate at 30 ug; Primary: Anti-ECM1 at 1/1000 dilution; Secondary: IRDye800CW Goat Anti-Rabbit IgG at 1/20000 dilution; Predicted band size: 59 kD; Observed band size: 65 kD

band size: 64 kD