

PSMD11 antibody

Catalog Number: 114394

Product name

PSMD11 antibody

IP: 1:200-1:2000

IF: 1:10-1:100

Specificity

Human,Mouse,Rat; other species not tested.

Antibody description

PSMD11 Rabbit Polyclonal antibody. Positive WB detected in HeLa cells, A549 cells, MCF7 cells, mouse testis tissue, rat brain tissue. Positive IP detected in MCF-7 cells. Positive IF detected in MCF-7 cells. Observed molecular weight by Western-blot: 47 kDa

Preparation

This antibody was obtained by immunization of PSMD11 recombinant protein (Accession Number: NM_002815). Purification method: Antigen affinity purified.

Formulation

PBS with 0.02% sodium azide and 50% glycerol pH 7.3.

Storage

Store at -20°C. DO NOT ALIQUOT

Clonality

Polyclonal

Ig Type

Rabbit IgG

Applications

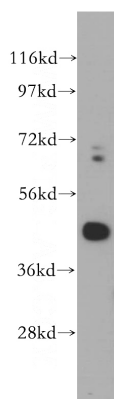
ELISA, WB, IP, IF

Dilutions

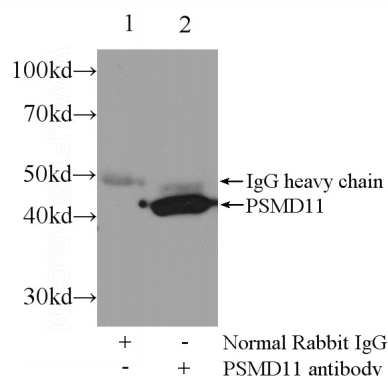
Recommended Dilution:

WB: 1:1000-1:10000

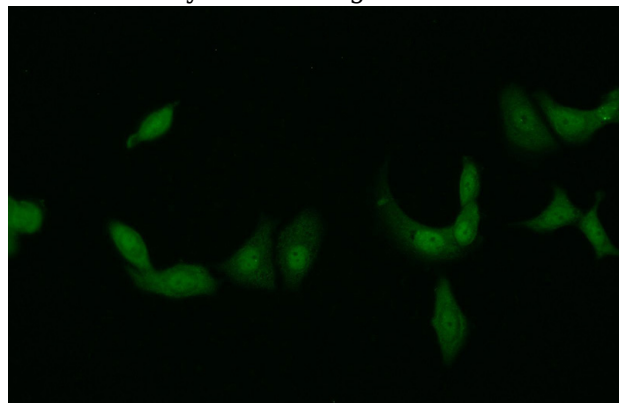
Validations



HeLa cells were subjected to SDS PAGE followed by western blot with Catalog No:114394(PSMD11 antibody) at dilution of 1:500



IP Result of anti-PSMD11 (IP:Catalog No:114394, 3ug; Detection:Catalog No:114394 1:500) with MCF-7 cells lysate 2000ug.



Immunofluorescent analysis of MCF-7 cells using Catalog No:114394(PSMD11 Antibody) at dilution

PSMD11 antibody



Catalog Number: 114394

of 1:25 and Alexa Fluor 488-conjugated AffiniPure Goat Anti-Rabbit IgG(H+L)