

KAT6A Polyclonal Antibody

Catalog Number: 162394

Product name

KAT6A Polyclonal Antibody

Specificity

Human, Mouse, Rat

Antibody description

Polyclonal antibody to KAT6A

Preparation

Antigen: Recombinant fusion protein containing a sequence corresponding to amino acids 800-1000 of human KAT6A (NP_001092883.1).

Formulation

PBS with 0.02% sodium azide, 50% glycerol, pH7.3.

Storage

Store at -20°C. Avoid freeze / thaw cycles.

Clonality

Polyclonal

Ig Type

Rabbit IgG

Applications

WB, IHC, IF

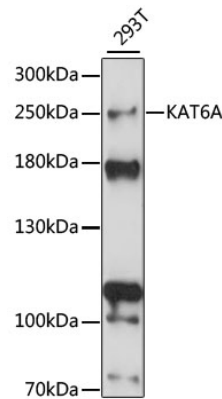
Dilutions

WB 1:500 - 1:2000

IHC 1:50 - 1:200

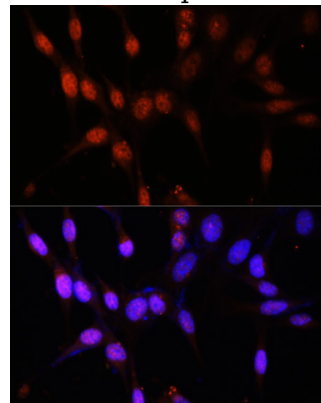
IF 1:50 - 1:200

Validations



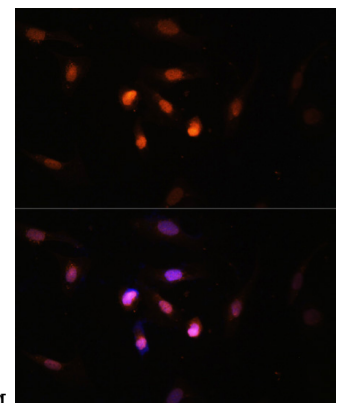
Western blot - KAT6A Polyclonal Antibody

Western blot analysis of extracts of 293T cells, using KAT6A antibody at 1:1000 dilution. Secondary antibody: HRP Goat Anti-Rabbit IgG (H+L) at 1:10000 dilution. Lysates/proteins: 25ug per lane. Blocking buffer: 3% nonfat dry milk in TBST. Detection: ECL Basic Kit. Exposure time: 10s.



Immunofluorescence - KAT6A Polyclonal Antibody

Immunofluorescence analysis of NIH/3T3 cells using KAT6A antibody at dilution of 1:100. Blue:



DAPI for nuclear staining.

KAT6A Polyclonal Antibody



Catalog Number: 162394

Immunofluorescence - KAT6A Polyclonal Antibody
Immunofluorescence analysis of U2OS cells using

KAT6A antibody at dilution of 1:100. Blue: DAPI
for nuclear staining.