

# Anti-IL12RB1 antibody



Catalog Number: 142394

## Product name

Anti-IL12RB1 antibody

## Specificity

Human IL12RB1 / CD212

## Antibody description

Rabbit Polyclonal to Human IL12RB1

## Preparation

Produced in rabbits immunized with a synthetic peptide corresponding to the C-terminus of the Human IL12RB1 / CD212, and purified by antigen affinity chromatography.

## Formulation

0.2 µm filtered solution in PBS

## Storage

This antibody can be stored at 2°C-8°C for one month without detectable loss of activity. Antibody products are stable for twelve months from date of receipt when stored at -20°C to -80°C.

Preservative-Free.

Sodium azide is recommended to avoid contamination (final concentration 0.05%-0.1%). It is toxic to cells and should be disposed of properly. Avoid repeated freeze-thaw cycles.

## Clonality

Polyclonal

## Ig Type

Rabbit IgG

## Applications

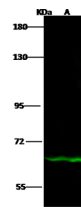
WB, IP

## Dilutions

WB: 5-20 µg/ml

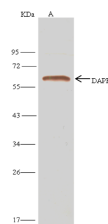
IP: 1-4 µl/mg of lysate

## Validations



Items	Lanes
Sample (whole cell lysate)	A431
Sample Volume (µg/lane)	30
Cell	7.5% SDS-PAGE reducing gel
Recommended Concentration	5-20 µg/ml
Secondary Antibody	DyLight 800-labeled Antibody to Rabbit IgG (H+L), at 1:5000 dilution.
Explanation	Developed using Odyssey imaging system. Predicted band size : 73 kDa Observed band size : 64 kDa

IL12RB1 / CD212 Antibody, Rabbit PAb, Antigen Affinity Purified, Western blot



Items	Lanes
Sample (whole cell lysate)	Jurkat
Sample quantity	0.5 mg
IP antibody quantity	4 µL
Protein G agarose	15 µl of 50% Protein G agarose
Cell	13% SDS-PAGE reducing gel
Primary antibody	KLH-SMCC-sinoAR7-HPV16-SMCC-sinoA1340 antibody at 10 µg/ml
Secondary antibody	Clean-Biotin IP Detection Reagent (HRP) at 1:500 dilution

IL12RB1 / CD212 Antibody, Rabbit PAb, Antigen Affinity Purified, Immunoprecipitation