

CYP2E1-Specific antibody



Catalog Number: 109694

Product name

CYP2E1-Specific antibody

Specificity

Human, Mouse, Rat; other species not tested.

Antibody description

CYP2E1-Specific Rabbit Polyclonal antibody. Positive IF detected in Hela cells. Positive WB detected in Jurkat cells, mouse liver tissue. Observed molecular weight by Western-blot: 50-57kd, 38kd

Preparation

This antibody was obtained by immunization of Peptide (Accession Number: NM_000773). Purification method: Antigen affinity purified.

Formulation

PBS with 0.02% sodium azide and 50% glycerol pH 7.3.

Storage

Store at -20°C. DO NOT ALIQUOT

Clonality

Polyclonal

Ig Type

Rabbit IgG

Applications

ELISA, IF, WB

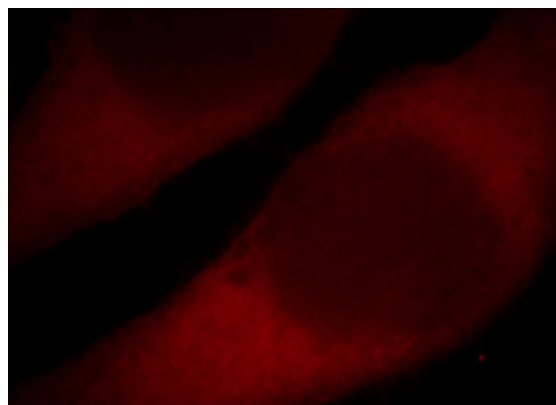
Dilutions

Recommended Dilution:

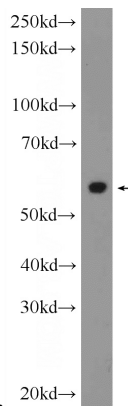
WB: 1:200-1:2000

IF: 1:10-1:100

Validations



Immunofluorescent analysis of Hela cells, using CYP2E1 antibody Catalog No:109694 at 1:25 dilution and Rhodamine-labeled goat anti-rabbit



IgG (red). 20kd→

Jurkat cells were subjected to SDS PAGE followed by western blot with Catalog No:109694(CYP2E1-Specific Antibody) at dilution of 1:1000