

# Anti-Cofilin Rabbit antibody



Catalog Number: 167694

## Product name

Anti-Cofilin Rabbit antibody

## Specificity

Human, Mouse, Rat

## Antibody description

Cofilin Rabbit monoclonal antibody

## Preparation

Antigen: A synthetic peptide of human Cofilin

## Formulation

50nM Tris-Glycine(pH 7.4), 0.15M NaCl, 40%Glycerol, 0.01% sodium azide and 0.05% BSA

## Storage

Store at 4°C short term. Store at -20°C long term. Avoid freeze / thaw cycle.

## Clonality

Monoclonal

## Ig Type

Rabbit IgG

## Applications

WB, IHC-P, ICC/IF, FC

## Dilutions

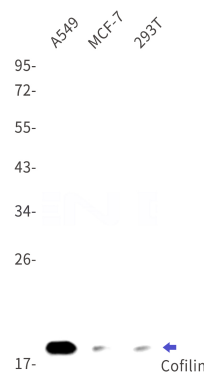
WB: 1/1000

IHC: 1/50

ICC/IF: 1/50

FC: 1/200

## Validations



Western blot detection of Cofilin in A549, MCF-7, 293T cell lysates using Cofilin Rabbit mAb(1:1000 diluted). Predicted band size: 19kDa. Observed band size: 19kDa.