

MME,CD10 antibody



Catalog Number: 112694

Product name

MME,CD10 antibody

Specificity

Human, Mouse, Rat; other species not tested.

Antibody description

MME,CD10 Rabbit Polyclonal antibody. Positive WB detected in mouse kidney tissue, human kidney tissue, rat kidney tissue. Positive FC detected in HepG2 cells. Positive IF detected in HepG2 cells. Observed molecular weight by Western-blot: 90-110 kDa

Preparation

This antibody was obtained by immunization of MME,CD10 recombinant protein (Accession Number: NM_001354643). Purification method: Antigen Affinity purified.

Formulation

PBS with 0.02% sodium azide and 50% glycerol pH 7.3.

Storage

Store at -20°C. DO NOT ALIQUOT

Clonality

Polyclonal

Ig Type

Rabbit IgG

Applications

ELISA, WB, IF, FC

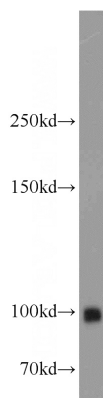
Dilutions

Recommended Dilution:

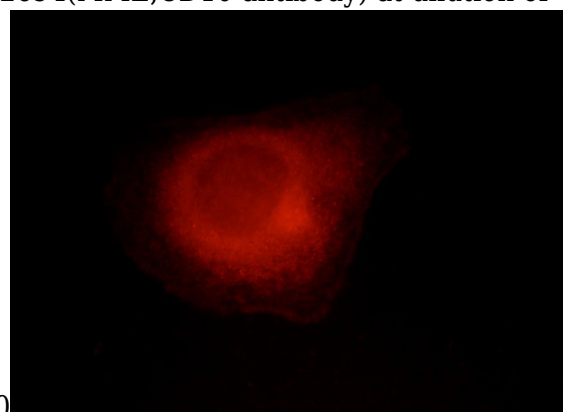
WB: 1:500-1:5000

IF: 1:20-1:200

Validations

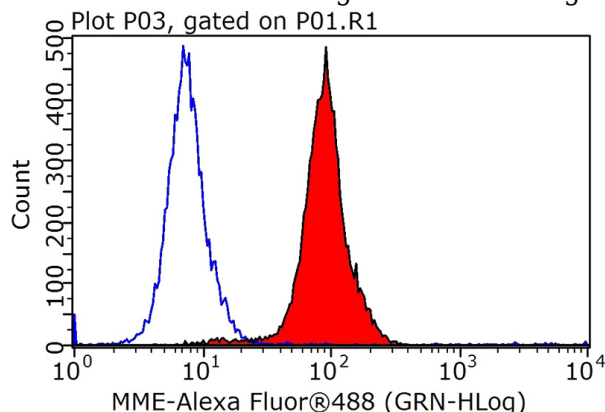


mouse kidney tissue were subjected to SDS PAGE followed by western blot with Catalog No:112694(MME,CD10 antibody) at dilution of



1:1000

Immunofluorescent analysis of HepG2 cells, using MME antibody Catalog No:112694 at 1:50 dilution and Rhodamine-labeled goat anti-rabbit IgG (red).



1X10⁶ HepG2 cells were stained with .2ug MME,CD10 antibody (Catalog No:112694, red) and control antibody (blue). Fixed with 90%

MME,CD10 antibody



Catalog Number: 112694

MeOH blocked with 3% BSA (30 min). Alexa Fluor 488-conjugated AffiniPure Goat Anti-Rabbit IgG(H+L) with dilution 1:1000.