

Anti-BAMBI/NMA antibody



Catalog Number: 102694

Product name

Anti-BAMBI/NMA antibody

Immunogen

[Human BAMBI/NMA \(His Tag\) recombinant protein](#)

Specificity

Human BAMBI / NMA

Antibody description

Rabbit polyclonal to BAMBI/NMA

Preparation

Produced in rabbits immunized with purified, recombinant Human BAMBI (rh BAMBI; NP_036474.1; Met 1-Ala 152). BAMBI specific IgG was purified by human BAMBI affinity chromatography

Formulation

0.2 µm filtered solution in PBS with 5% trehalose

Storage

This antibody can be stored at 2°C-8°C for one month without detectable loss of activity. Antibody products are stable for twelve months from date of receipt when stored at -20°C to -80°C.

Preservative-Free.

Sodium azide is recommended to avoid contamination (final concentration 0.05%-0.1%). It is toxic to cells and should be disposed of

properly. Avoid repeated freeze-thaw cycles.

Clonality

Polyclonal

Ig Type

Rabbit IgG

Applications

ELISA, WB

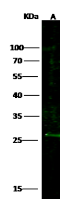
Dilutions

WB: 20-50 µg/mL

ELISA: 0.1-0.2 µg/mL

This antibody can be used at 0.1-0.2 µg/mL with the appropriate secondary reagents to detect Human BAMBI. The detection limit for Human BAMBI is approximately 0.00975 ng/well.

Validations



Lanes	A
Items	
Sample (Membrane lysate)	K562
Sample Volume (µg/lane)	20
Gel	13% SDS-PAGE reducing gel
Recommended Concentration	20-50 µg/ml
Secondary Antibody	Dylight 800 labeled Antibody to Rabbit IgG (H+L), at 1:5000 dilution.
Developed using Odyssey imaging system.	
Explanation	Predicted band size : 29kDa Observed band size : 26 kDa

BAMBI / NMA Antibody, Rabbit PAb, Antigen Affinity Purified, Western blot