

Anti-CD300E antibody



Catalog Number: 142294

Product name

Anti-CD300E antibody

Specificity

Human CD300E / CMRF35-A5

Antibody description

Rabbit Polyclonal to Human CD300E

Preparation

Produced in rabbits immunized with a synthetic peptide corresponding to the N-terminus of the Human CD300E / CMRF35-A5, and purified by antigen affinity chromatography.

Formulation

0.2 µm filtered solution in PBS

Storage

This antibody can be stored at 2°C-8°C for one month without detectable loss of activity. Antibody products are stable for twelve months from date of receipt when stored at -20°C to -80°C.

Preservative-Free.

Sodium azide is recommended to avoid contamination (final concentration 0.05%-0.1%). It is toxic to cells and should be disposed of

properly. Avoid repeated freeze-thaw cycles.

Clonality

Polyclonal

Ig Type

Rabbit IgG

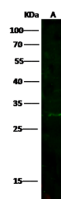
Applications

WB

Dilutions

WB: 5-20 µg/ml

Validations



Items	Lanes	A
Sample (whole cell lysate)		293T
Sample Volume (µg/lane)		30
Gel		13% SDS-PAGE reducing gel
Recommended Concentration		10 µg/ml
Secondary Antibody		Dylight 800-labeled Antibody To Rabbit IgG (H+L), at 1:5000 dilution.
Developed using Odyssey imaging system.		
Explanation		Predicted band size : 23 kDa Observed band size : 30 kDa

CD300E / CMRF35-A5 Antibody, Rabbit PAb, Antigen Affinity Purified, Western blot