

HER2/ErbB2 antibody

Catalog Number: 111294

Product name

HER2/ErbB2 antibody

IHC: 1:20-1:200

IF: 1:20-1:200

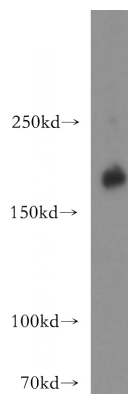
Specificity

Human; other species not tested.

Validations

Antibody description

HER2/ErbB2 Rabbit Polyclonal antibody. Positive WB detected in HeLa cells, MCF7 cells. Positive IHC detected in human breast cancer tissue, Breast Cancer slides. Positive IF detected in HeLa cells. Observed molecular weight by Western-blot: 185 kDa



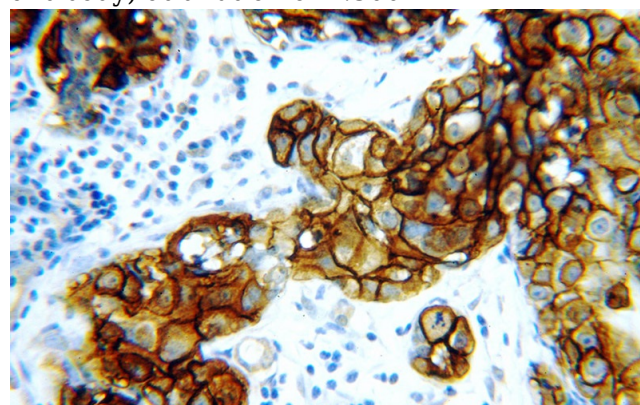
Preparation

This antibody was obtained by immunization of Peptide (Accession Number: NM_004448). Purification method: Antigen affinity purified.

HeLa cells were subjected to SDS PAGE followed by western blot with Catalog No:111294(ERBB2 antibody) at dilution of 1:300

Formulation

PBS with 0.02% sodium azide and 50% glycerol pH 7.3.



Storage

Store at -20°C. DO NOT ALIQUOT

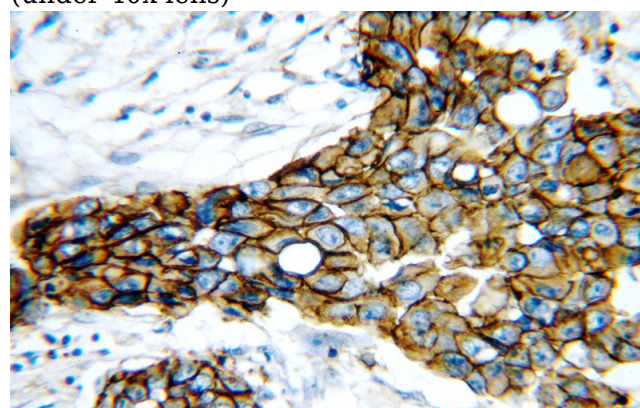
Clonality

Polyclonal

Immunohistochemical of paraffin-embedded human breast cancer using Catalog No:111294(ERBB2 antibody) at dilution of 1:50 (under 40x lens)

Ig Type

Rabbit IgG



Applications

ELISA, WB, IF, IHC

Dilutions

Recommended Dilution:

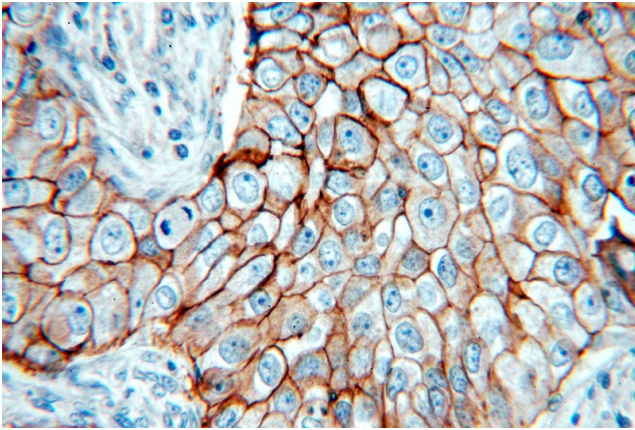
WB: 1:500-1:5000

Immunohistochemical of paraffin-embedded

HER2/ErbB2 antibody

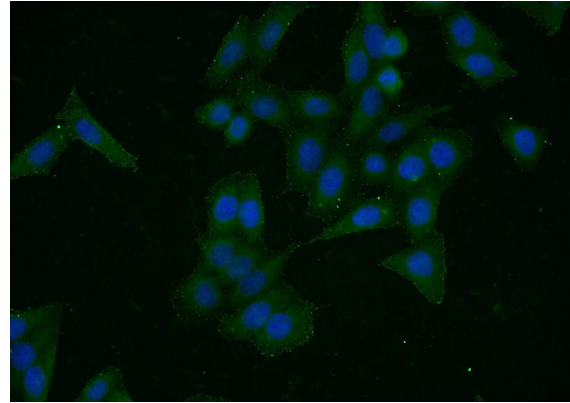
Catalog Number: 111294

human breast cancer using Catalog
No:111294(ERBB2 antibody) at dilution of 1:50
(under 40x lens)



Immunohistochemical of paraffin-embedded
human breast cancer using Catalog

No:111294(ERBB2 antibody) at dilution of 1:50
(under 40x lens)



Immunofluorescent analysis of HeLa cells using
Catalog No:111294(ERBB2 Antibody) at dilution of
1:50 and Alexa Fluor 488-conjugated AffiniPure
Goat Anti-Rabbit IgG(H+L)