

Anti-ATG12/Apg12 antibody



Catalog Number: 100294

Product name

Anti-ATG12/Apg12 antibody

Specificity

Human ATG12

Antibody description

Rabbit polyclonal to ATG12/Apg12

Preparation

Produced in rabbits immunized with a synthetic peptide corresponding to the N-terminus of the human ATG12, and purified by antigen affinity chromatography.

Formulation

0.2 µm filtered solution in PBS

Storage

This antibody can be stored at 2°C-8°C for one month without detectable loss of activity. Antibody products are stable for twelve months from date of receipt when stored at -20°C to -80°C.

Preservative-Free.

Sodium azide is recommended to avoid contamination (final concentration 0.05%-0.1%). It is toxic to cells and should be disposed of properly. Avoid repeated freeze-thaw cycles.

Clonality

Polyclonal

Ig Type

Rabbit IgG

Applications

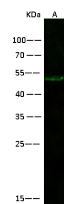
WB, IF, ICC/IF

Dilutions

WB: 10-30 µg/ml

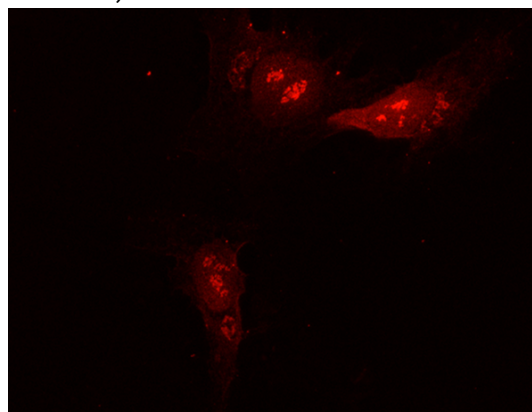
ICC/IF: 0.5-1.5 µg/ml

Validations



Items	Lanes	A
Sample (whole cell lysate)		293T
Sample Volume (µg/lane)		30
Gel		13% SDS-PAGE reducing gel
Recommended Concentration		10-30 µg/ml
Secondary Antibody		Dylight 800-labeled Antibody To Rabbit IgG (H+L), at 1:5000 dilution
Developed		using Odyssey imaging system
Explanation		Predicted band size : 15 kDa Observed band size : 50 kDa

ATG12 Antibody, Rabbit PAb, Antigen Affinity Purified, Western blot



ATG12 Antibody, Rabbit PAb, Antigen Affinity Purified, Immunofluorescence

Immunofluorescence staining of ATG12 in HeLa cells. Cells were fixed with 4% PFA, permeabilized with 0.3% Triton X-100 in PBS, blocked with 10% serum, and incubated with rabbit anti-human ATG12 polyclonal antibody (1 µg/ml) at 4°C overnight. Then cells were stained with the Alexa Fluor® 594-conjugated Goat Anti-rabbit IgG secondary antibody (red). Positive staining was localized to cytoplasm.