

# PKM1-specific antibody

Catalog Number: 106994

## Product name

PKM1-specific antibody

## Specificity

Human, Mouse, Rat; other species not tested.

## Antibody description

PKM1-specific Rabbit Polyclonal antibody. Positive IHC detected in human skeletal muscle tissue, human brain tissue, human heart tissue. Positive IF detected in HeLa cells. Positive IP detected in mouse brain tissue. Positive WB detected in mouse skeletal muscle tissue, 293 cell, HepG2/MCF7 cells, mouse brain tissue, mouse heart tissue, mouse muscle/liver tissues, mouse skeletal muscle, rat skeletal muscle tissue. Observed molecular weight by Western-blot: 58 kDa

## Preparation

This antibody was obtained by immunization of Peptide (Accession Number: NM\_182470). Purification method: Antigen affinity purified.

## Formulation

PBS with 0.02% sodium azide and 50% glycerol pH 7.3.

## Storage

Store at -20°C. DO NOT ALIQUOT

## Clonality

Polyclonal

## Ig Type

Rabbit IgG

## Applications

ELISA, WB, IHC, IP, IF

## Dilutions

Recommended Dilution:

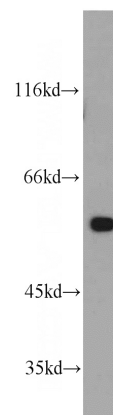
WB: 1:500-1:5000

IP: 1:500-1:5000

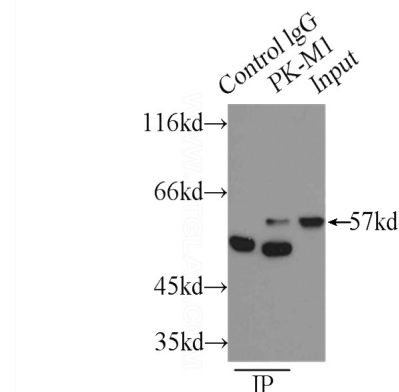
IHC: 1:20-1:200

IF: 1:20-1:200

## Validations



mouse skeletal muscle tissue were subjected to SDS PAGE followed by western blot with Catalog No:113860(PK-M1-specific antibody) at dilution of



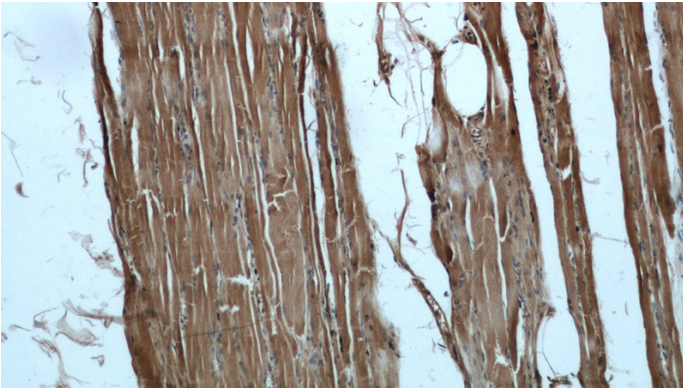
1:1500

IP Result of anti-PK-M1-specific (IP:Catalog No:113860, 3ug; Detection:Catalog No:113860 1:1000) with mouse brain tissue lysate 4000ug.

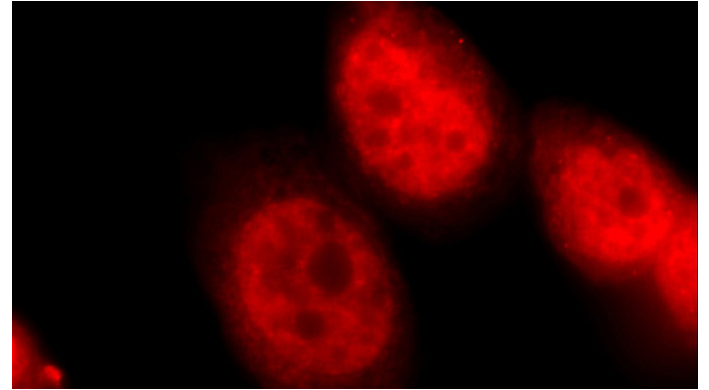
# PKM1-specific antibody

Catalog Number: 106994

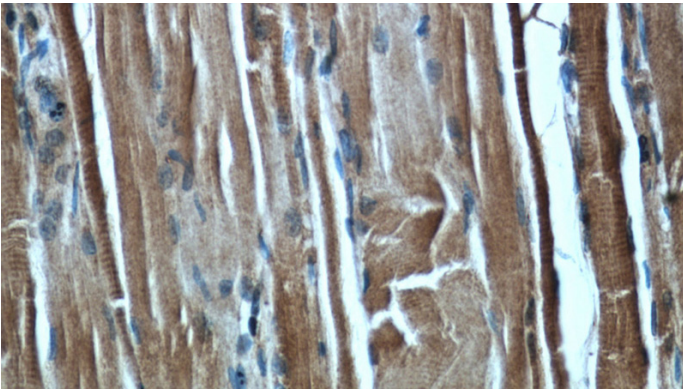
---



Immunohistochemical of paraffin-embedded human skeletal muscle using Catalog No:113860(PK-M1-specific antibody) at dilution of 1:100 (under 40x lens)



Immunohistochemical of paraffin-embedded human skeletal muscle using Catalog No:113860(PK-M1-specific antibody) at dilution of 1:100 (under 10x lens)



Immunofluorescent analysis of HeLa cells using Catalog No:113860(PK-M1-specific Antibody) at dilution of 1:50 and Rhodamine-Goat anti-Rabbit IgG