

# SRP68 antibody

Catalog Number: 115594

## Product name

SRP68 antibody

IP: 1:200-1:1000

IHC: 1:20-1:200

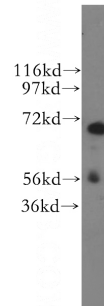
## Specificity

Human, Mouse, Rat; other species not tested.

## Validations

## Antibody description

SRP68 Rabbit Polyclonal antibody. Positive WB detected in human kidney tissue, human brain tissue. Positive IP detected in mouse kidney tissue. Positive IHC detected in human gliomas tissue. Observed molecular weight by Western-blot: 68 kDa



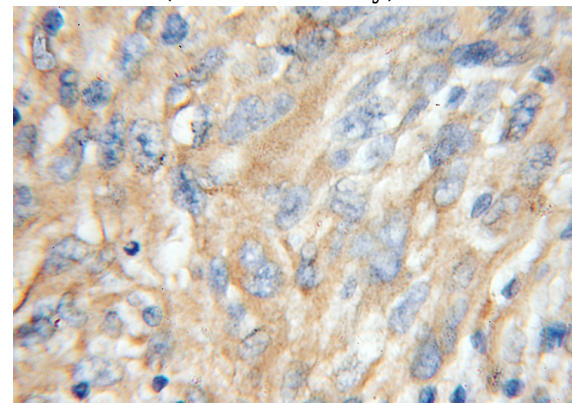
## Preparation

This antibody was obtained by immunization of SRP68 recombinant protein (Accession Number: BC020238). Purification method: Antigen affinity purified.

human kidney tissue were subjected to SDS PAGE followed by western blot with Catalog No:115594(SRP68 antibody) at dilution of 1:400

## Formulation

PBS with 0.1% sodium azide and 50% glycerol pH 7.3.



## Storage

Store at -20°C. DO NOT ALIQUOT

## Clonality

Polyclonal

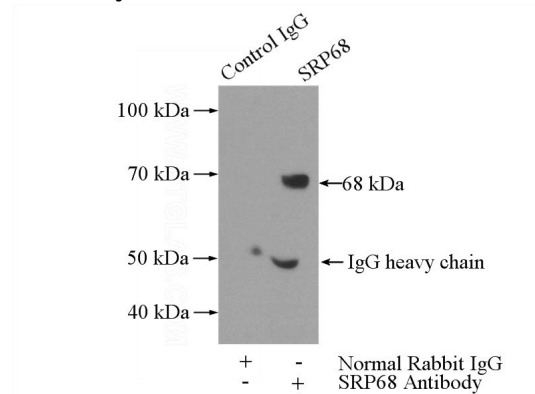
Immunohistochemical of paraffin-embedded human gliomas using Catalog No:115594(SRP68 antibody) at dilution of 1:100 (under 10x lens)

## Ig Type

Rabbit IgG

## Applications

ELISA, WB, IHC, IP



## Dilutions

Recommended Dilution:

WB: 1:500-1:5000

IP Result of anti-SRP68 (IP:Catalog No:115594, 4ug; Detection:Catalog No:115594 1:400) with

# SRP68 antibody



Catalog Number: 115594

---

mouse kidney tissue lysate 4000ug.