

Mouse CCL2/MCP-1 (His Tag) recombinant protein



Catalog Number: 501594

General Information

Gene Name Synonym

Monocyte chemoattractant protein 1; Monocyte chemotactic protein 1; Platelet-derived growth factor-inducible protein JE; Small-inducible cytokine A2

Protein Construction

A DNA sequence encoding the mouse CCL2 (NP_035463.1) (Met1-Asn148) was expressed with a C-terminal polyhistidine tag.

Organism

Mouse

Expression Host

Baculovirus-Insect Cells

QC Testing

Purity

> 80 % as determined by SDS-PAGE

Endotoxin

< 1.0 EU per μg of the protein as determined by the LAL method

Stability

Samples are stable for up to twelve months from date of receipt at -70°C

Predicted N terminal

Gln 24

Molecular Mass

The recombinant mouse CCL2 comprises 135 amino acids and has a predicted molecular mass of 15.2 kDa. The apparent molecular mass of the protein is approximately 27 kDa in SDS-PAGE under reducing conditions.

Formulation

Lyophilized from sterile 20 mM Tris, 500 mM NaCl, 10% glycerol, pH 7.4.

1. 5 % trehalose and mannitol are added as protectants before lyophilization.
2. Please contact us for any concerns or special requirements.

Usage Guide

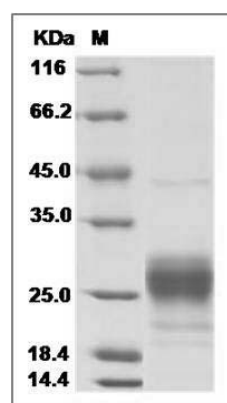
Storage

Store it under sterile conditions at -20°C to -80°C . It is recommended that the protein be aliquoted for optimal storage. Avoid repeated freeze-thaw cycles.

Reconstitution

Adding sterile water, prepare a stock solution of 0.25 mg/ml. Concentration is measured by UV-Vis.

SDS-PAGE



Mouse CCL2 / MCP-1 / MCP1 Protein (His Tag)
SDS-PAGE