

# Anti-Adrb3 antibody

Catalog Number: 175194

## Product name

Anti-Adrb3 antibody

## Specificity

Human, Mouse, Rat, Dog, Pig, Sheep

## Antibody description

Rabbit polyclonal antibody to Adrb3

## Preparation

This antigen of this antibody was klh conjugated synthetic peptide derived from human adrb3 310-408/408

## Formulation

Liquid, 0.01M TBS(pH7.4) with 1% BSA, 0.03% Proclin300 and 50% Glycerol.

## Storage

Store at -20°C for one year. Avoid repeated freeze/thaw cycles. The lyophilized antibody is stable at room temperature for at least one month and for greater than a year when kept at -20°C. When reconstituted in sterile pH 7.4 0.01M PBS or diluent of antibody the antibody is stable for at least two weeks at 2-4°C.

## Clonality

Polyclonal

## Ig Type

Rabbit IgG

## Applications

WB, IHC-P

## Dilutions

WB:1:500-2000

IHC-P:1:400-800

## Validations

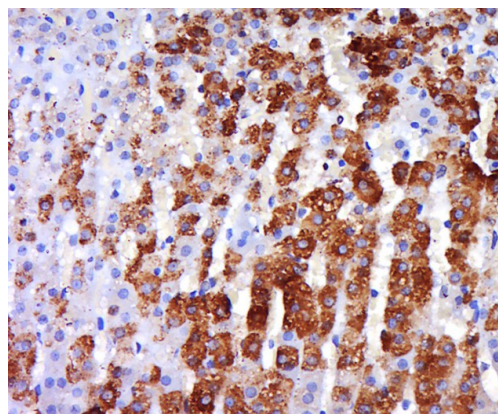
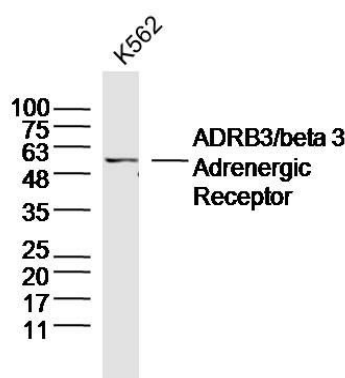


Fig1: Tissue/cell: Rat adrenal gland; 4% Paraformaldehyde-fixed and paraffin-embedded;; Antigen retrieval: citrate buffer ( 0.01M, pH 6.0 ), Boiling bathing for 15min; Block endogenous peroxidase by 3% Hydrogen peroxide for 30min; Blocking buffer (normal goat serum,C-0005) at 37°C for 20 min;; Incubation: Anti-ADRB3 Polyclonal Antibody, Unconjugated 1:500, overnight at 4°C, followed by conjugation to the secondary antibody(SP-0023) and DAB(C-0010)



staining

Fig2: Sample:; K562(Human) Cell Lysate at 40 ug; Primary: Anti-beta 3 Adrenergic Receptor at 1/300 dilution; Secondary: IRDye800CW Goat Anti-Rabbit IgG at 1/20000 dilution; Predicted band size: 44 kD; Observed band size: 54 kD