

# Anti-CXCL12 / SDF-1 beta antibody



Catalog Number: 101194

## Product name

Anti-CXCL12 / SDF-1 beta antibody

## Immunogen

[Mouse CXCL12 / SDF-1 beta recombinant protein](#)

## Specificity

Mouse CXCL12 / SDF-1 beta

## Antibody description

Rabbit polyclonal to CXCL12 / SDF-1 beta

## Preparation

Produced in rabbits immunized with purified, recombinant Mouse CXCL12 / SDF-1 beta (rM CXCL12 / SDF-1 beta; P40224-1; Lys22-Lys89). CXCL12 / SDF-1 beta specific IgG was purified by Mouse CXCL12 / SDF-1 beta affinity chromatography.

## Formulation

0.2 µm filtered solution in PBS

## Storage

This antibody can be stored at 2°C-8°C for one month without detectable loss of activity. Antibody products are stable for twelve months from date of receipt when stored at -20°C to -80°C.

Preservative-Free.

Sodium azide is recommended to avoid contamination (final concentration 0.05%-0.1%). It is toxic to cells and should be disposed of properly. Avoid repeated freeze-thaw cycles.

## Clonality

Polyclonal

## Ig Type

Rabbit IgG

## Applications

ELISA, WB

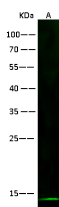
## Dilutions

WB: 10-20 µg/ml

ELISA: 0.1-0.2 µg/ml

This antibody can be used at 0.1-0.2 µg/ml with the appropriate secondary reagents to detect Mouse CXCL12 / SDF-1 beta. The detection limit for Mouse CXCL12 / SDF-1 beta is approximately < 0.039 ng/well.

## Validations



Items	Lanes
Sample (whole cell lysate)	Jurkat
Sample Volume (µg/lane)	30
Gel	13% SDS-PAGE reducing gel
Recommended concentration	10-20µg/ml
Secondary Antibody	Dylight 800-labeled Antibody To Rabbit IgG (H+L) at 1:5000 dilution.
Developed using Odyssey imaging system.	
Explanation	Predicted band size : 10 kDa Observed band size : 13 kDa

CXCL12 / SDF-1 beta Antibody, Rabbit PAb, Antigen Affinity Purified, Western blot