

# EIF3E antibody



Catalog Number: 110194

## Product name

EIF3E antibody

WB: 1:500-1:5000

IHC: 1:20-1:200

## Specificity

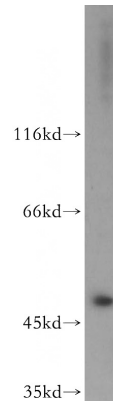
Human, Mouse, Rat; other species not tested.

IF: 1:10-1:100

## Antibody description

EIF3E Rabbit Polyclonal antibody. Positive WB detected in HeLa cells, HEK-293 cells, HepG2 cells, Jurkat cells. Positive IF detected in HepG2 cells, Ethacrynic acid treated HepG2 cells. Positive IHC detected in human breast cancer tissue. Observed molecular weight by Western-blot: 48 kDa

## Validations



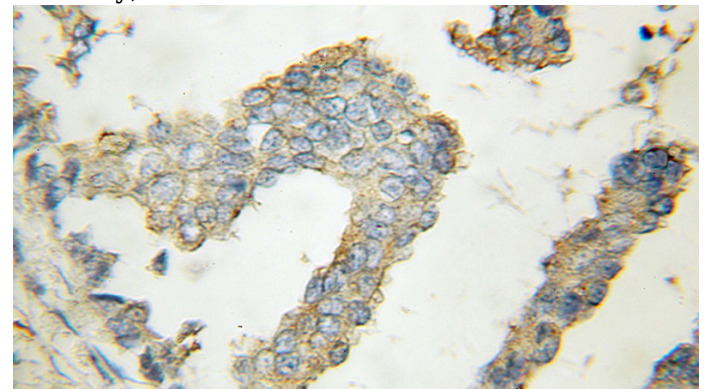
## Preparation

This antibody was obtained by immunization of EIF3E recombinant protein (Accession Number: NM\_001568). Purification method: Antigen affinity purified.

HeLa cells were subjected to SDS PAGE followed by western blot with Catalog No:110194(EIF3E antibody) at dilution of 1:500

## Formulation

PBS with 0.1% sodium azide and 50% glycerol pH 7.3.



## Storage

Store at -20°C. DO NOT ALIQUOT

## Clonality

Polyclonal

Immunohistochemical of paraffin-embedded human breast cancer using Catalog No:110194(EIF3E antibody) at dilution of 1:50 (under 40x lens)

## Ig Type

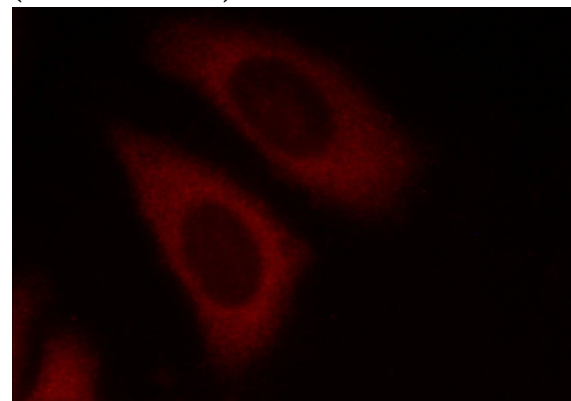
Rabbit IgG

## Applications

ELISA, WB, IHC, IF

## Dilutions

Recommended Dilution:



# EIF3E antibody



Catalog Number: 110194

---

Immunofluorescent analysis of HepG2 cells using

Catalog No:110194(EIF3E Antibody) at dilution of  
1:25 and Rhodamine-Goat anti-Rabbit IgG