

TBX6 antibody

Catalog Number: 115894

Product name

TBX6 antibody

Specificity

Human, Mouse, Rat; other species not tested.

Antibody description

TBX6 Rabbit Polyclonal antibody. Positive IP detected in human placenta tissue. Positive WB detected in HeLa cells, A375 cells, A549 cells, human lung tissue, human placenta tissue, Raji cells. Observed molecular weight by Western-blot: 58 kDa

Preparation

This antibody was obtained by immunization of TBX6 recombinant protein (Accession Number: XM_047434551). Purification method: Antigen affinity purified.

Formulation

PBS with 0.1% sodium azide and 50% glycerol pH 7.3.

Storage

Store at -20°C. DO NOT ALIQUOT

Clonality

Polyclonal

Ig Type

Rabbit IgG

Applications

ELISA, WB, IP

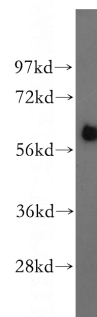
Dilutions

Recommended Dilution:

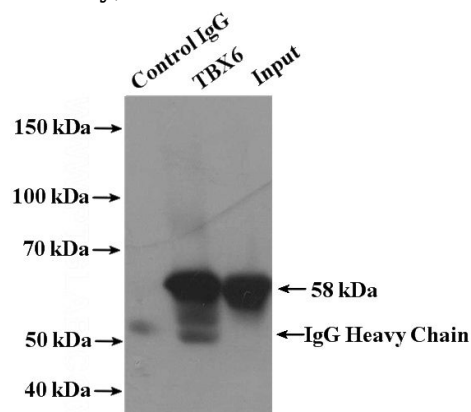
WB: 1:500-1:5000

IP: 1:200-1:2000

Validations



HeLa cells were subjected to SDS PAGE followed by western blot with Catalog No:115894(TBX6 antibody) at dilution of 1:800



IP Result of anti-TBX6 (IP:Catalog No:115894, 4ug; Detection:Catalog No:115894 1:500) with human placenta tissue lysate 2800ug.