

# RABEP2 antibody



Catalog Number: 114494

## Product name

RABEP2 antibody

WB: 1:500-1:5000

IP: 1:500-1:5000

## Specificity

Human, Mouse, Rat; other species not tested.

IHC: 1:20-1:200

IF: 1:20-1:200

## Antibody description

RABEP2 Rabbit Polyclonal antibody. Positive IP detected in mouse liver tissue. Positive WB detected in Jurkat cells, HeLa cells, mouse liver tissue. Positive IF detected in HeLa cells. Positive IHC detected in human prostate cancer tissue. Observed molecular weight by Western-blot: 59-62 kDa

## Preparation

This antibody was obtained by immunization of RABEP2 recombinant protein (Accession Number: BC058900). Purification method: Antigen affinity purified.

## Formulation

PBS with 0.02% sodium azide and 50% glycerol pH 7.3.

## Storage

Store at -20°C. DO NOT ALIQUOT

## Clonality

Polyclonal

## Ig Type

Rabbit IgG

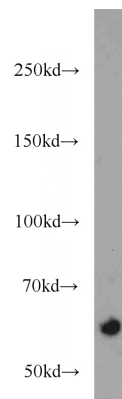
## Applications

ELISA, WB, IHC, IF, IP

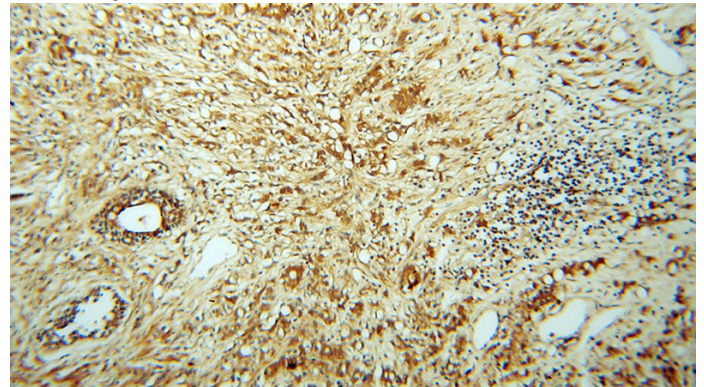
## Dilutions

Recommended Dilution:

## Validations



Jurkat cells were subjected to SDS PAGE followed by western blot with Catalog No:114494(RABEP2 antibody) at dilution of 1:1000

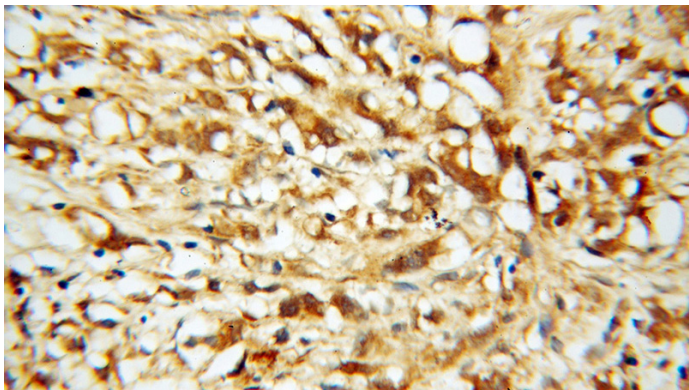


Immunohistochemical of paraffin-embedded human prostate cancer using Catalog No:114494(RABEP2 antibody) at dilution of 1:100 (under 10x lens)

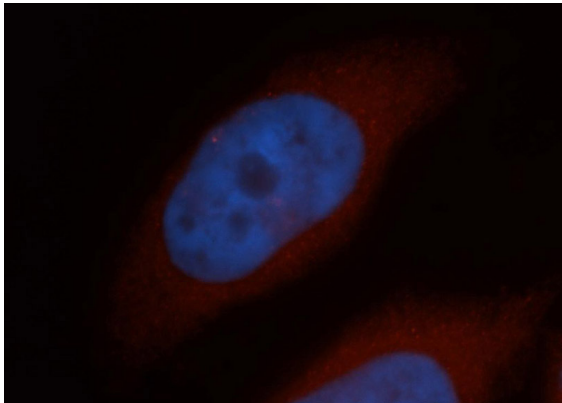
# RABEP2 antibody



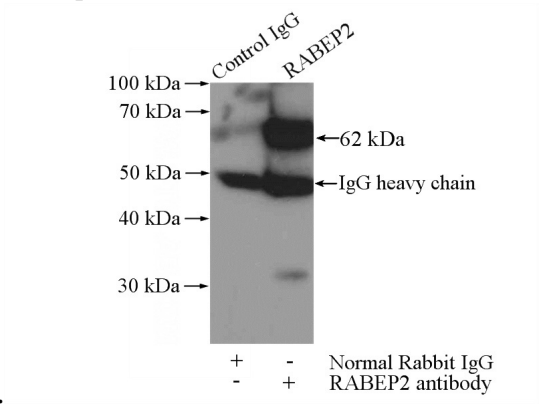
Catalog Number: 114494



Immunohistochemical of paraffin-embedded human prostate cancer using Catalog No:114494(RABEP2 antibody) at dilution of 1:100 (under 40x lens)



Immunofluorescent analysis of HeLa cells, using RABEP2 antibody Catalog No:114494 at 1:50 dilution and Rhodamine-labeled goat anti-rabbit IgG (red). Blue pseudocolor = DAPI (fluorescent



DNA dye).

IP Result of anti-RABEP2 (IP:Catalog No:114494, 4ug; Detection:Catalog No:114494 1:1000) with mouse liver tissue lysate 4000ug.