

# Anti-CHI3L1 antibody



Catalog Number: 175094

## Product name

Anti-CHI3L1 antibody

## Specificity

Human

## Antibody description

Mouse monoclonal antibody to CHI3L1

## Preparation

This antigen of this antibody was recombinant protein within extracellular domain of human chi3l1.

## Formulation

Liquid, 1\*PBS (pH7.4), 0.2% BSA, 50% Glycerol. Preservative: 0.05% Sodium Azide.

## Storage

Store at +4°C after thawing. Aliquot store at -20°C. Avoid repeated freeze / thaw cycles.

## Clonality

Monoclonal

## Ig Type

Mouse IgG2a

## Applications

WB, IHC-P

## Dilutions

WB:1:500-1:2,000

IHC-P:1:50-1:200

## Validations

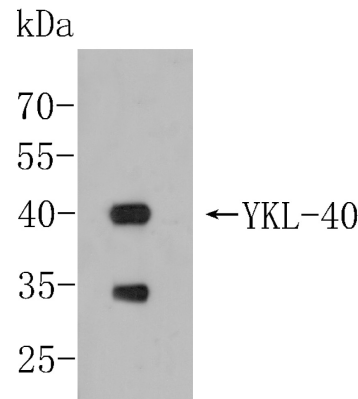


Fig1:: Western blot analysis of YKL-40/CHI3L1 on THP-1 cell lysates. Proteins were transferred to a PVDF membrane and blocked with 5% BSA in PBS for 1 hour at room temperature. The primary antibody ( 1/500) was used in 5% BSA at room temperature for 2 hours. Goat Anti-Mouse IgG - HRP Secondary Antibody (HA1006) at 1:5,000 dilution was used for 1 hour at room temperature.

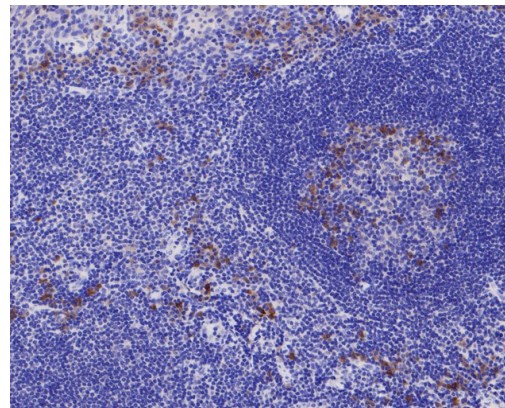


Fig2:: Immunohistochemical analysis of paraffin-embedded human tonsil tissue using anti-YKL-40/CHI3L1 antibody. The section was pre-treated using heat mediated antigen retrieval with Tris-EDTA buffer (pH 8.0-8.4) for 20 minutes. The tissues were blocked in 5% BSA for 30 minutes at room temperature, washed with ddH<sub>2</sub>O and PBS, and then probed with the primary antibody ( 1/400) for 30 minutes at room temperature. The detection was performed using an HRP conjugated compact polymer system. DAB was used as the chromogen. Tissues were counterstained with hematoxylin and mounted with DPX.