

PIMREG Polyclonal Antibody



Catalog Number: 163094

Product name

PIMREG Polyclonal Antibody

Specificity

Human, Mouse

Antibody description

Polyclonal antibody to PIMREG

Preparation

Antigen: Recombinant fusion protein containing a sequence corresponding to amino acids 100-200 of human PIMREG (NP_001182157).

Formulation

PBS with 0.02% sodium azide, 50% glycerol, pH7.3.

Storage

Store at -20°C. Avoid freeze / thaw cycles.

Clonality

Polyclonal

Ig Type

Rabbit IgG

Applications

WB, IHC, IF

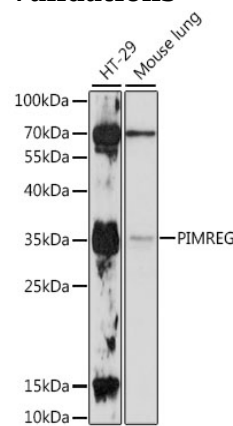
Dilutions

WB 1:500 - 1:2000

IHC 1:50 - 1:200

IF 1:50 - 1:200

Validations



Western blot - PIMREG Polyclonal Antibody

Western blot analysis of extracts of various cell lines, using PIMREG antibody at 1:500 dilution. Secondary antibody: HRP Goat Anti-Rabbit IgG (H+L) at 1:10000 dilution. Lysates/proteins: 25ug per lane. Blocking buffer: 3% nonfat dry milk in TBST. Detection: ECL Basic Kit. Exposure time: 10s.