

# GMCL1 antibody



Catalog Number: 111094

## Product name

GMCL1 antibody

WB: 1:500-1:5000

IHC: 1:20-1:200

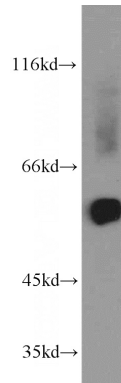
## Specificity

Human, Mouse, Rat; other species not tested.

## Antibody description

GMCL1 Rabbit Polyclonal antibody. Positive IHC detected in human thyroid tissue, human testis tissue. Positive WB detected in human heart tissue, mouse heart tissue, mouse placenta tissue, mouse skeletal muscle tissue. Observed molecular weight by Western-blot: 55 kDa

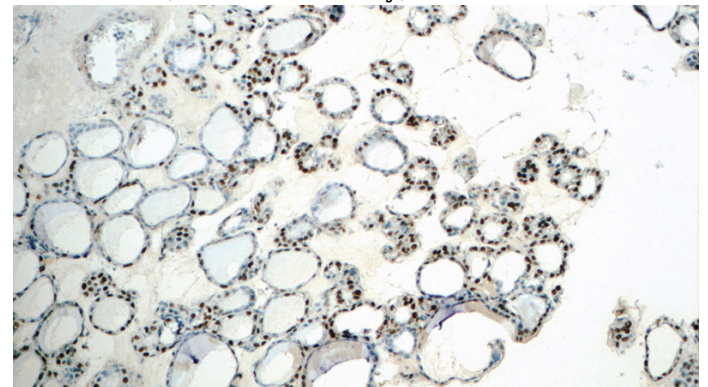
## Validations



human heart tissue were subjected to SDS PAGE followed by western blot with Catalog No:111094(GMCL1 antibody) at dilution of 1:1500

## Preparation

This antibody was obtained by immunization of GMCL1 recombinant protein (Accession Number: NM\_178439). Purification method: Antigen affinity purified.



## Formulation

PBS with 0.1% sodium azide and 50% glycerol pH 7.3.

## Storage

Store at -20°C. DO NOT ALIQUOT

## Clonality

Polyclonal

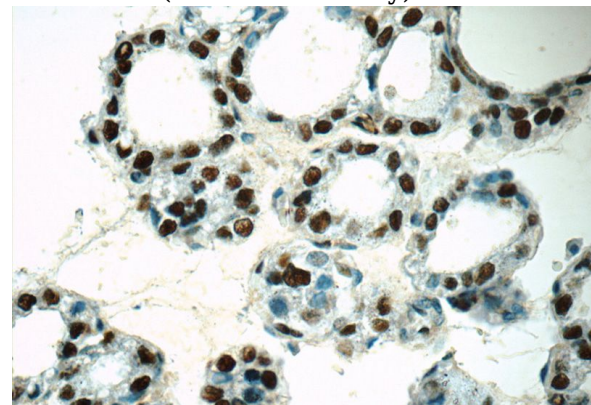
## Ig Type

Rabbit IgG

## Applications

ELISA, WB, IHC

Immunohistochemistry of paraffin-embedded human thyroid tissue slide using Catalog No:111094(GMCL1 Antibody) at dilution of 1:50



## Dilutions

Recommended Dilution:

Immunohistochemistry of paraffin-embedded human thyroid tissue slide using Catalog No:111094(GMCL1 Antibody) at dilution of 1:50