

General Information

Gene Name Synonym

Serine; Or cysteine peptidase inhibitor, clade F, member 2

Protein Construction

A DNA sequence encoding the rat SERPINF2 (NP_001011892.1) (Met1-Lys491) was expressed with a polyhistidine tag at the C-terminus.

Organism

Rat

Expression Host

Human Cells

QC Testing

Purity

> 95 % as determined by SDS-PAGE.

Endotoxin

< 1.0 EU per μg protein as determined by the LAL method.

Stability

Samples are stable for up to twelve months from date of receipt at -70°C

Predicted N terminal

Met 28

Molecular Mass

The recombinant rat SERPINF2 consists of 475 amino acids and predicts a molecular mass of 53.6 kDa.

Formulation

Lyophilized from sterile PBS, pH 7.4.

1. Normally 5 % - 8 % trehalose, mannitol and 0.01% Tween80 are added as protectants before lyophilization. Specific concentrations are included in the hardcopy of COA.
2. Please contact us for any concerns or special requirements.

Usage Guide

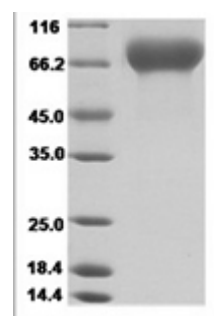
Storage

Store it under sterile conditions at -20°C to -80°C . It is recommended that the protein be aliquoted for optimal storage. Avoid repeated freeze-thaw cycles.

Reconstitution

A hardcopy of COA with reconstitution instruction is sent along with the products. Please refer to it for detailed information.

SDS-PAGE



Rat SerpinF2 Protein 14497