

MTMR15 antibody



Catalog Number: 112784

Product name

MTMR15 antibody

Specificity

human; other species not tested.

Antibody description

MTMR15 Rabbit Polyclonal antibody. Positive WB detected in HeLa cells, human spleen tissue. Observed molecular weight by Western-blot: 63-68kd

Preparation

This antibody was obtained by immunization of MTMR15 recombinant protein (Accession Number: NM_001146096). Purification method: Antigen affinity purified.

Formulation

PBS with 0.02% sodium azide and 50% glycerol pH 7.3.

Storage

Store at -20°C. DO NOT ALIQUOT

Clonality

Polyclonal

Ig Type

Rabbit IgG

Applications

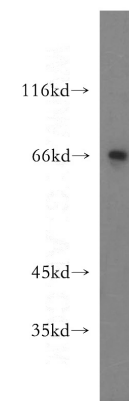
ELISA, WB

Dilutions

Recommended Dilution:

WB: 1:200-1:2000

Validations



HeLa cells were subjected to SDS PAGE followed by western blot with Catalog No:112784(MTMR15 antibody) at dilution of 1:300