

Human KLKB1/KLK3 (His tag) recombinant protein



Catalog Number: 518384

General Information

Gene Name Synonym

Plasma kallikrein
Fletcher factor
Kininogenin
Plasma prekallikrein
KLKB1
KLK3

Protein Construction

A DNA sequence encoding the Human KLKB1/KLK3 Gly20-Ala638 is expressed with a 6His tag at the C-terminus.

Organism

Human

Expression Host

Human Cells

QC Testing

Purity

>95% as determined by SDS-PAGE.

Endotoxin

<1.0 EU per µg protein as determined by the LAL

method.

Stability

Store for up to 6 months at -20°C

Formulation

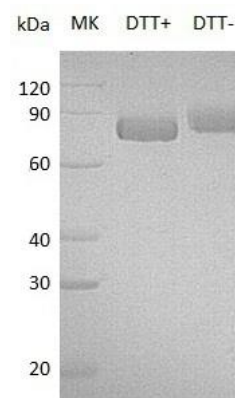
Supplied as a 0.2 µm filtered solution of 20mM TrisHCl, 150mM NaCl, 10% Glycerol, pH8.0.

Usage Guide

Storage

Store at <-20°C, minimize freeze-thaw cycles.

SDS-PAGE



Human KLKB1/KLK3 (His tag) recombinant protein