

# BCCIP antibody

Catalog Number: 108384

## Product name

BCCIP antibody

IP: 1:200-1:2000

IF: 1:50-1:500

## Specificity

Human, Mouse, Rat; other species not tested.

## Antibody description

BCCIP Rabbit Polyclonal antibody. Positive WB detected in HeLa cells, A549 cells. Positive IP detected in HeLa cells. Positive IF detected in HeLa cells. Observed molecular weight by Western-blot: 50-58 kDa

## Preparation

This antibody was obtained by immunization of BCCIP recombinant protein (Accession Number: NM\_078468). Purification method: Antigen affinity purified.

## Formulation

PBS with 0.02% sodium azide and 50% glycerol pH 7.3.

## Storage

Store at -20°C. DO NOT ALIQUOT

## Clonality

Polyclonal

## Ig Type

Rabbit IgG

## Applications

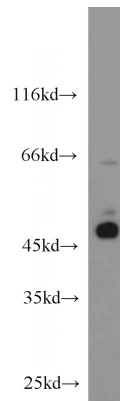
ELISA, WB, IP, IF

## Dilutions

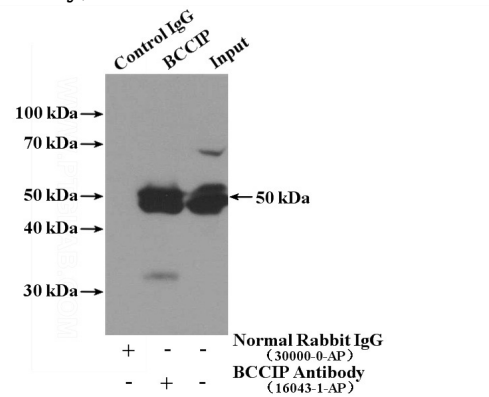
Recommended Dilution:

WB: 1:200-1:2000

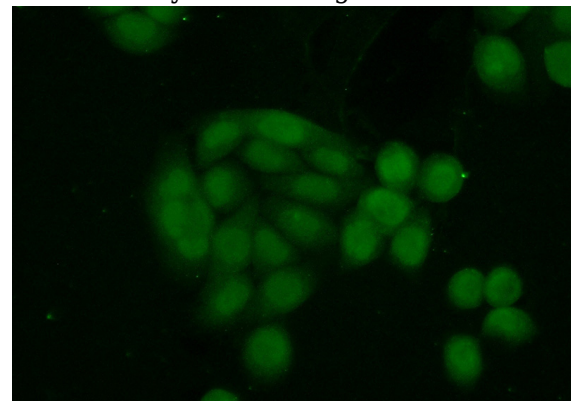
## Validations



HeLa cells were subjected to SDS PAGE followed by western blot with Catalog No:108384(BCCIP antibody) at dilution of 1:800



IP Result of anti-BCCIP (IP:Catalog No:108384, 4ug; Detection:Catalog No:108384 1:800) with HeLa cells lysate 3200ug.



Immunofluorescent analysis of (10% Formaldehyde) fixed HeLa cells using Catalog

# BCCIP antibody



Catalog Number: 108384

---

No:108384(BCCIP Antibody) at dilution of 1:50

and Alexa Fluor 488-conjugated AffiniPure Goat  
Anti-Rabbit IgG(H+L)