

CYP1A2-Specific antibody



Catalog Number: 109684

Product name

CYP1A2-Specific antibody

IP: 1:200-1:1000

IHC: 1:20-1:200

Specificity

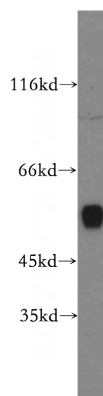
Human, Mouse, Rat; other species not tested.

IF: 1:10-1:100

Antibody description

CYP1A2-Specific Rabbit Polyclonal antibody. Positive WB detected in mouse liver tissue. Positive IP detected in mouse liver tissue. Positive IHC detected in human liver tissue. Positive IF detected in HeLa cells. Positive FC detected in HeLa cells. Observed molecular weight by Western-blot: 58 kDa

Validations



Preparation

This antibody was obtained by immunization of Peptide (Accession Number: NM_000761). Purification method: Antigen affinity purified.

mouse liver tissue were subjected to SDS PAGE followed by western blot with Catalog No:109684(CYP1A2-Specific antibody) at dilution of 1:1000

Formulation

PBS with 0.02% sodium azide and 50% glycerol pH 7.3.

Storage

Store at -20°C. DO NOT ALIQUOT

Clonality

Polyclonal

Ig Type

Rabbit IgG

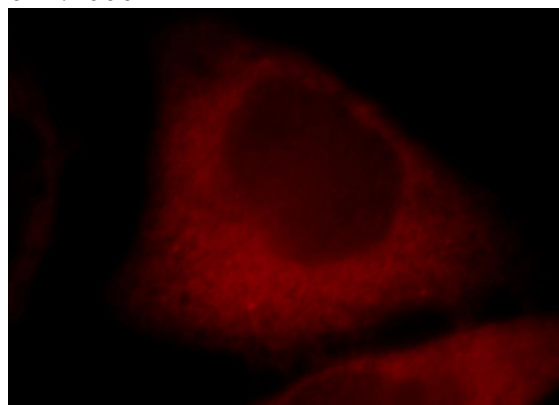
Applications

ELISA, WB, IF, FC, IP, IHC

Dilutions

Recommended Dilution:

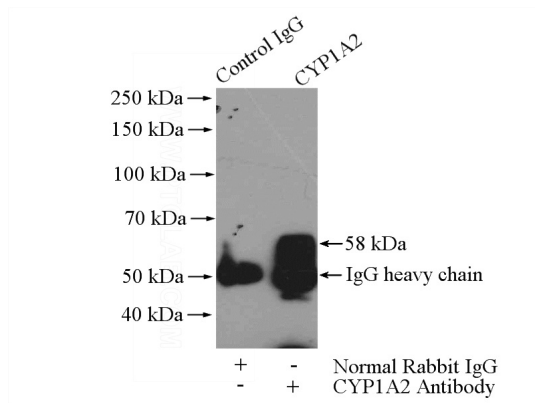
WB: 1:500-1:5000



Immunofluorescent analysis of HeLa cells, using CYP1A2 antibody Catalog No:109684 at 1:25 dilution and Rhodamine-labeled goat anti-rabbit

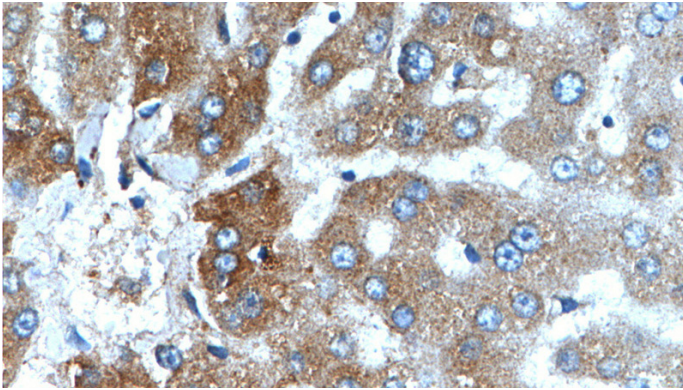
CYP1A2-Specific antibody

Catalog Number: 109684

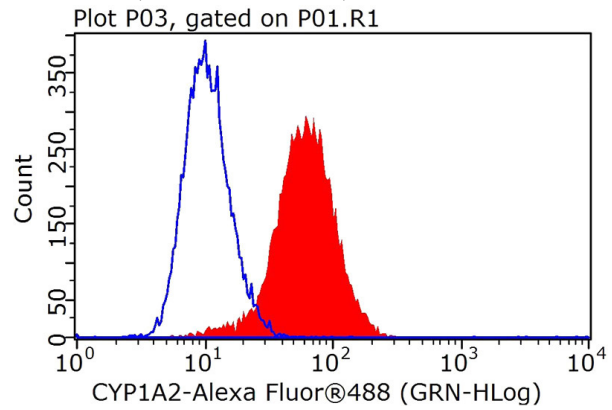


IgG (red).

IP Result of anti-CYP1A2-Specific (IP:Catalog No:109684, 4ug; Detection:Catalog No:109684 1:300) with mouse liver tissue lysate 4000ug.



Immunohistochemistry of paraffin-embedded human liver tissue slide using Catalog No:109684(CYP1A2-Specific Antibody) at dilution of 1:200 (under 40x lens).



1×10^6 HeLa cells were stained with .5ug CYP1A2-Specific antibody (Catalog No:109684, red) and control antibody (blue). Fixed with 4% PFA blocked with 3% BSA (30 min). FITC-Goat anti-Rabbit IgG with dilution 1:100.