

# STAT1 antibody

Catalog Number: 115684

## Product name

STAT1 antibody

## Specificity

Human, Rat; other species not tested.

## Antibody description

STAT1 Rabbit Polyclonal antibody. Positive FC detected in MCF-7 cells. Positive IHC detected in human breast cancer tissue, human testis tissue. Positive IP detected in PC-3 cells. Positive WB detected in PC-3 cells, A431 cells, HEK-293 cells, HepG2 cells. Observed molecular weight by Western-blot: 84 kDa

## Preparation

This antibody was obtained by immunization of STAT1 recombinant protein (Accession Number: NM\_139266). Purification method: Antigen affinity purified.

## Formulation

PBS with 0.1% sodium azide and 50% glycerol pH 7.3.

## Storage

Store at -20°C. DO NOT ALIQUOT

## Clonality

Polyclonal

## Ig Type

Rabbit IgG

## Applications

ELISA, WB, IHC, FC, IP

## Dilutions

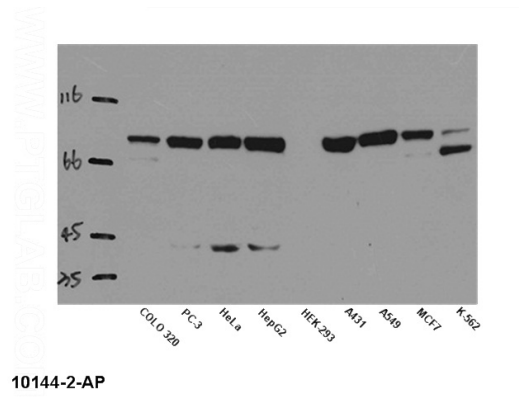
Recommended Dilution:

WB: 1:200-1:2000

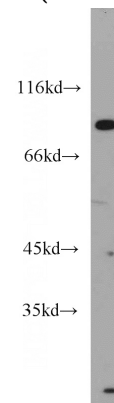
IP: 1:200-1:2000

IHC: 1:20-1:200

## Validations

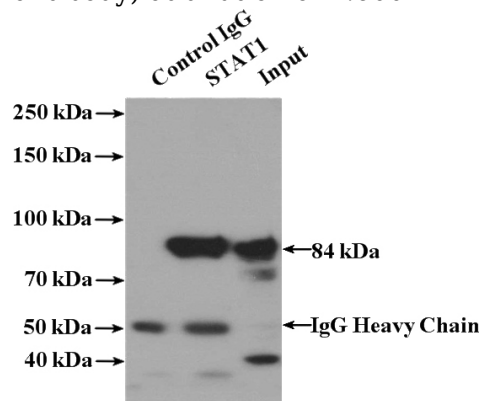


WB result of anti-STAT1 (Catalog No:115684) in



different cells lysates

PC-3 cells were subjected to SDS PAGE followed by western blot with Catalog No:115684(STAT1 antibody) at dilution of 1:600

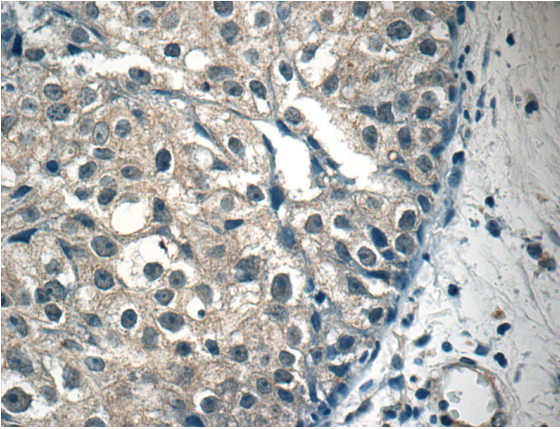


IP Result of anti-STAT1 (IP:Catalog No:115684, 4ug; Detection:Catalog No:115684 1:500) with

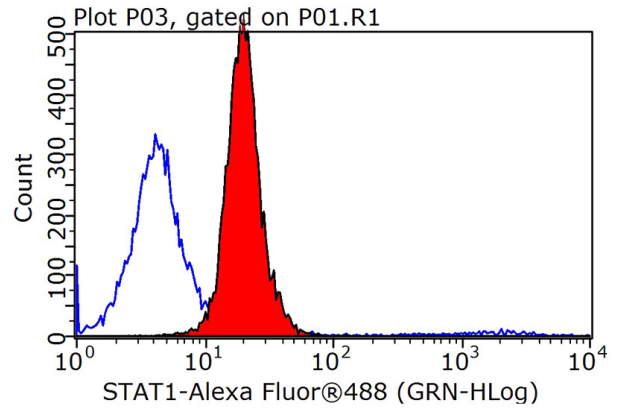
# STAT1 antibody

Catalog Number: 115684

PC-3 cells lysate 3200ug.



Immunohistochemistry of paraffin-embedded human breast cancer tissue slide using Catalog No:115684(STAT1 Antibody) at dilution of 1:50 (under 40x lens)



1X10<sup>6</sup> MCF-7 cells were stained with 0.2ug STAT1 antibody (Catalog No:115684, red) and control antibody (blue). Fixed with 90% MeOH blocked with 3% BSA (30 min). Alexa Fluor 488-conjugated AffiniPure Goat Anti-Rabbit IgG(H+L) with dilution 1:1000.