

General Information

Gene Name Synonym

Epidermal growth factor receptor-related protein;
Proto-oncogene Neu; Proto-oncogene c-ErbB-2;
p185erbB2; p185neu

Protein Construction

A DNA sequence encoding the rat ErbB2 (AAH61863.1) extracellular domain (Met 4-Thr 656) was expressed and purified, with seven additional amino acids (ALEVLFQ) at the C-terminus.

Organism

Rat

Expression Host

Human Cells

QC Testing

Purity

> 92 % as determined by SDS-PAGE

Endotoxin

< 1.0 EU per μg of the protein as determined by the LAL method

Stability

Samples are stable for up to twelve months from date of receipt at -70°C

Predicted N terminal

Thr 26

Molecular Mass

The recombinant rat ErbB2/Fc is a disulfide-linked homodimer. The reduced monomer comprises 638 amino acids and predicts a molecular mass of 70.6 kDa. The apparent molecular mass of the rat ErbB2 is approximately 95-105 kDa in SDS-PAGE under reducing conditions due to glycosylation.

Formulation

Lyophilized from sterile PBS, pH 7.4

1. 5 % trehalose and mannitol are added as protectants before lyophilization.

2. Please contact us for any concerns or special requirements.

Usage Guide

Storage

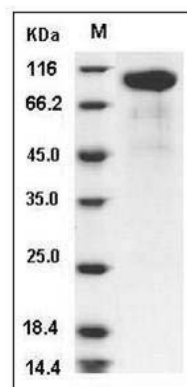
Store it under sterile conditions at -20°C to -80°C .

It is recommended that the protein be aliquoted for optimal storage. Avoid repeated freeze-thaw cycles.

Reconstitution

Adding sterile water, prepare a stock solution of 0.25 mg/ml. Concentration is measured by UV-Vis.

SDS-PAGE



Rat HER2 / ErbB2 Protein SDS-PAGE