

# IGFBP2 antibody

Catalog Number: 111684

## Product name

IGFBP2 antibody

IHC: 1:20-1:200

IF: 1:10-1:100

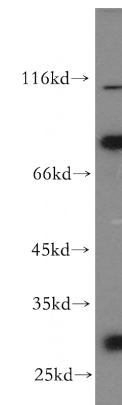
## Specificity

Human; other species not tested.

## Validations

## Antibody description

IGFBP2 Rabbit Polyclonal antibody. Positive WB detected in HeLa cells, PC-3 cells. Positive IF detected in HeLa cells. Positive IHC detected in human breast cancer tissue, human gliomas tissue, human prostate cancer tissue. Observed molecular weight by Western-blot: 32kd



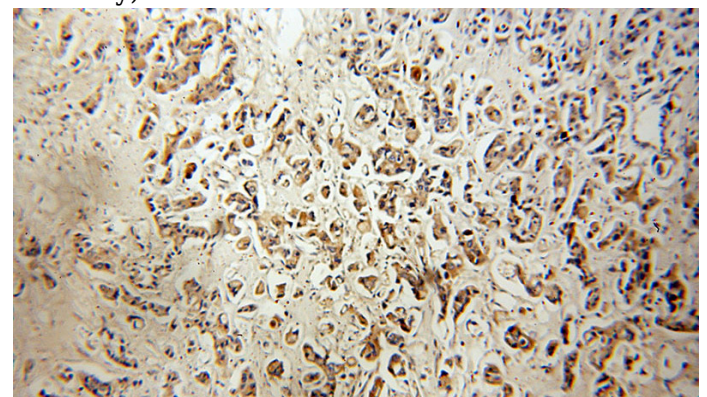
## Preparation

This antibody was obtained by immunization of IGFBP2 recombinant protein (Accession Number: NM\_000597). Purification method: Antigen affinity purified.

HeLa cells were subjected to SDS PAGE followed by western blot with Catalog No:111684(IGFBP2 antibody) at dilution of 1:300

## Formulation

PBS with 0.02% sodium azide and 50% glycerol pH 7.3.



## Storage

Store at -20°C. DO NOT ALIQUOT

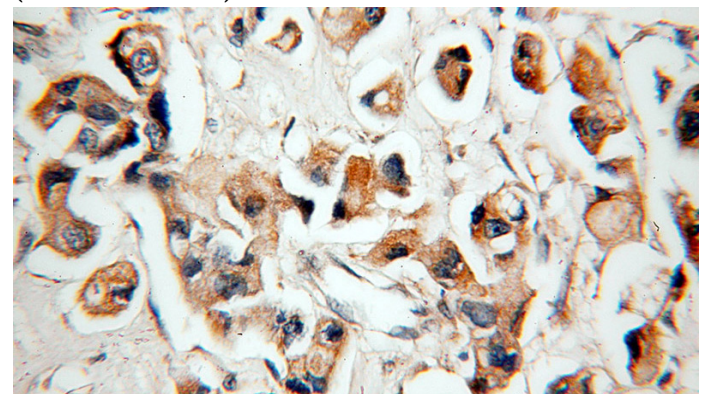
## Clonality

Polyclonal

Immunohistochemical of paraffin-embedded human breast cancer using Catalog No:111684(IGFBP2 antibody) at dilution of 1:50 (under 10x lens)

## Ig Type

Rabbit IgG



## Applications

ELISA, WB, IHC, IF

## Dilutions

Recommended Dilution:

WB: 1:200-1:2000

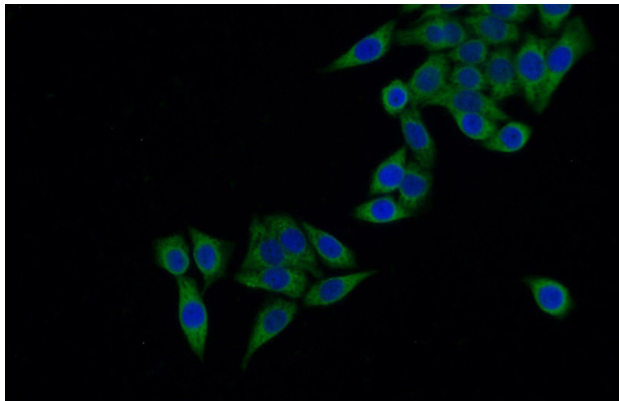
Immunohistochemical of paraffin-embedded

# IGFBP2 antibody

Catalog Number: 111684

---

human breast cancer using Catalog  
No:111684(IGFBP2 antibody) at dilution of 1:50  
(under 40x lens)



Immunofluorescent analysis of HeLa cells using  
Catalog No:111684(IGFBP2 Antibody) at dilution  
of 1:25 and Alexa Fluor 488-conjugated AffiniPure  
Goat Anti-Rabbit IgG(H+L)