

# ATF2-Specific antibody



Catalog Number: 108284

## Product name

ATF2-Specific antibody

## Specificity

Human, Mouse, Rat; other species not tested.

## Antibody description

ATF2-Specific Rabbit Polyclonal antibody. Positive WB detected in HeLa cells. Positive IHC detected in human breast cancer tissue. Observed molecular weight by Western-blot: 70kd

## Preparation

This antibody was obtained by immunization of Peptide (Accession Number: NM\_001256094). Purification method: Antigen affinity purified.

## Formulation

PBS with 0.02% sodium azide and 50% glycerol pH 7.3.

## Storage

Store at -20°C. DO NOT ALIQUOT

## Clonality

Polyclonal

## Ig Type

Rabbit IgG

## Applications

ELISA, WB, IHC

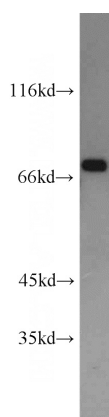
## Dilutions

Recommended Dilution:

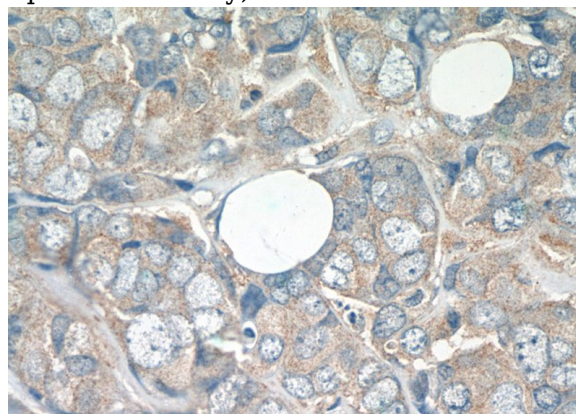
WB: 1:200-1:2000

IHC: 1:20-1:200

## Validations



HeLa cells were subjected to SDS PAGE followed by western blot with Catalog No:108284(ATF2-Specific antibody) at dilution of 1:600



Immunohistochemistry of paraffin-embedded human breast cancer tissue slide using Catalog No:108284(ATF2-Specific Antibody) at dilution of 1:50 (under 40x lens)