

KRAS-2A-specific antibody

Catalog Number: 106984

Product name

KRAS-2A-specific antibody

IHC: 1:20-1:200

IF: 1:50-1:500

Specificity

Human; other species not tested.

Antibody description

KRAS-2A-specific Rabbit Polyclonal antibody. Positive IF detected in SH-SY5Y cells. Positive IHC detected in human lung cancer tissue, human colon cancer tissue. Positive FC detected in HeLa cells. Positive WB detected in SH-SY5Y cells. Observed molecular weight by Western-blot: 21-24 kDa

Preparation

This antibody was obtained by immunization of Peptide (Accession Number: NM_033360). Purification method: Antigen affinity purified.

Formulation

PBS with 0.02% sodium azide and 50% glycerol pH 7.3.

Storage

Store at -20°C. DO NOT ALIQUOT

Clonality

Polyclonal

Ig Type

Rabbit IgG

Applications

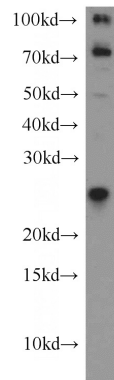
ELISA, WB, IHC, FC, IF

Dilutions

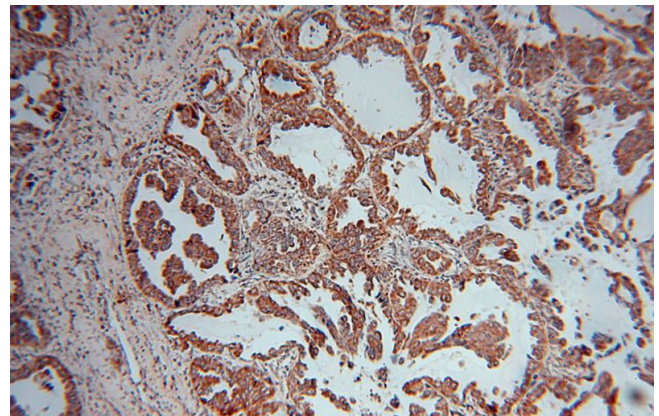
Recommended Dilution:

WB: 1:200-1:2000

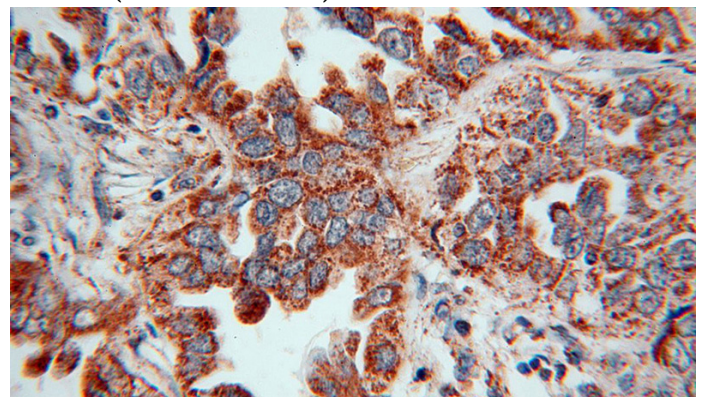
Validations



SH-SY5Y cells were subjected to SDS PAGE followed by western blot with Catalog No:112120(KRAS-2A-specific antibody) at dilution of 1:500



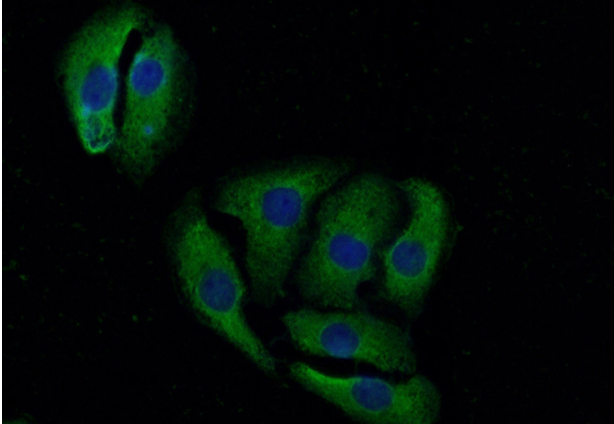
Immunohistochemical of paraffin-embedded human lung cancer using Catalog No:112120(KRAS-2A-specific antibody) at dilution of 1:50 (under 10x lens)



KRAS-2A-specific antibody

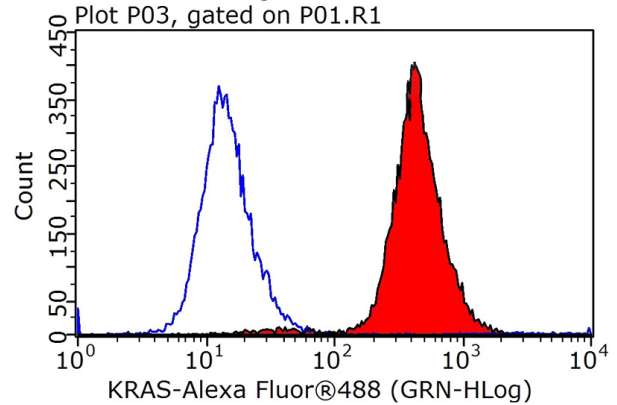
Catalog Number: 106984

Immunohistochemical of paraffin-embedded human lung cancer using Catalog No:112120(KRAS-2A-specific antibody) at dilution of 1:50 (under 40x lens)



Immunofluorescent analysis of (-20oc Acetone) fixed SH-SY5Y cells using Catalog No:112120(KRAS-2A-specific Antibody) at dilution

of 1:50 and Alexa Fluor 488-conjugated AffiniPure Goat Anti-Rabbit IgG(H+L)



1X10⁶ HeLa cells were stained with 0.2ug KRAS-2A-specific antibody (Catalog No:112120, red) and control antibody (blue). Fixed with 90% MeOH blocked with 3% BSA (30 min). Alexa Fluor 488-conjugated AffiniPure Goat Anti-Rabbit IgG(H+L) with dilution 1:1000.