

Human HtrA2 (His Tag) recombinant protein



Catalog Number: 500984

General Information

Gene Name Synonym

High temperature requirement protein A2; Omi stress-regulated endoprotease; Serine protease 25; Serine proteinase OMI

Protein Construction

A DNA sequence encoding the mature form of human HTRA2 (O43464-1) (Ala 134-Glu 458) was expressed, with a polyhistidine tag at the C-terminus.

Organism

Human

Expression Host

E. coli

QC Testing

Activity

Protease activity demonstrated by HtrA2 cleavage of bovine β -casein (Sigma, Catalog # C-6905). Incubation of β -casein at 0.2 mg/mL with Recombinant Human HTRA-2 at 0.02 mg/mL (ratio of 10:1) for 60 minutes at 45°C in 50 mM Tris, pH 8.0, which results in >95% cleavage of β -casein, as revealed by SDS-PAGE.

Purity

> 87 % as determined by SDS-PAGE

Endotoxin

Please contact us for more information.

Stability

Samples are stable for up to twelve months from date of receipt at -70°C

Predicted N terminal

Met

Molecular Mass

The recombinant human HTRA2 consisting of 336 amino acids and has a calculated molecular mass of 36.5 kDa as estimated in SDS-PAGE under reducing conditions.

Formulation

Lyophilized from sterile 50mM Tris, 0.3M NaCl, 1mM DTT, 20% Glycerol, pH 7.8
1. 5 % trehalose and mannitol are added as protectants before lyophilization.
2. Please contact us for any concerns or special requirements.

Usage Guide

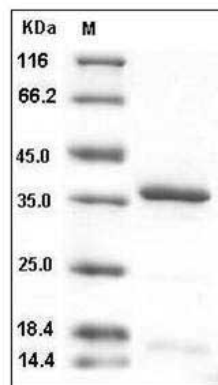
Storage

Store it under sterile conditions at -20°C to -80°C. It is recommended that the protein be aliquoted for optimal storage. Avoid repeated freeze-thaw cycles.

Reconstitution

Adding sterile water, prepare a stock solution of 0.25 mg/ml. Concentration is measured by UV-Vis.

SDS-PAGE



Human HTRA2 / OMI Protein (His Tag) SDS-PAGE