

# Anti-phospho-Met (c-Met) (Tyr1349) Rabbit antibody



Catalog Number: 167584

## Product name

Anti-phospho-Met (c-Met) (Tyr1349) Rabbit antibody

## Specificity

Human

## Antibody description

phospho-Met (c-Met) (Tyr1349) Rabbit monoclonal antibody

## Preparation

Antigen: A synthetic phosphopeptide corresponding to residues surrounding Tyr1349 of human Met

## Formulation

50nM Tris-Glycine(pH 7.4), 0.15M NaCl, 40%Glycerol, 0.01% sodium azide and 0.05% BSA

## Storage

Store at 4°C short term. Store at -20°C long term. Avoid freeze / thaw cycle.

## Clonality

Monoclonal

## Ig Type

Rabbit IgG

## Applications

WB, IHC-P, IP

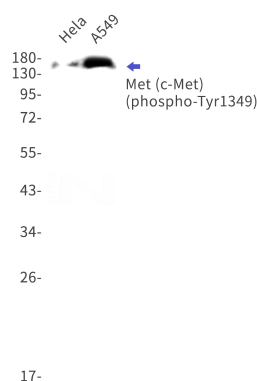
## Dilutions

WB: 1/1000

IHC: 1/20

IP: 1/20

## Validations



Western blot detection of phospho-Met (c-Met) (Tyr1349) in HeLa,A549 cell lysates using phospho-Met (c-Met) (Tyr1349) Rabbit mAb(1:1000 diluted).Predicted band size:156kDa.Observed band size:170-140kDa.