

SRFBP1 antibody

Catalog Number: 115584

Product name

SRFBP1 antibody

Specificity

Human, Mouse; other species not tested.

Antibody description

SRFBP1 Rabbit Polyclonal antibody. Positive WB detected in mouse heart tissue, HeLa cells, HepG2 cells. Positive IHC detected in human pancreas cancer tissue. Observed molecular weight by Western-blot: 50 kDa

Preparation

This antibody was obtained by immunization of SRFBP1 recombinant protein (Accession Number: NM_152546). Purification method: Antigen affinity purified.

Formulation

PBS with 0.1% sodium azide and 50% glycerol pH 7.3.

Storage

Store at -20°C. DO NOT ALIQUOT

Clonality

Polyclonal

Ig Type

Rabbit IgG

Applications

ELISA, IHC, WB

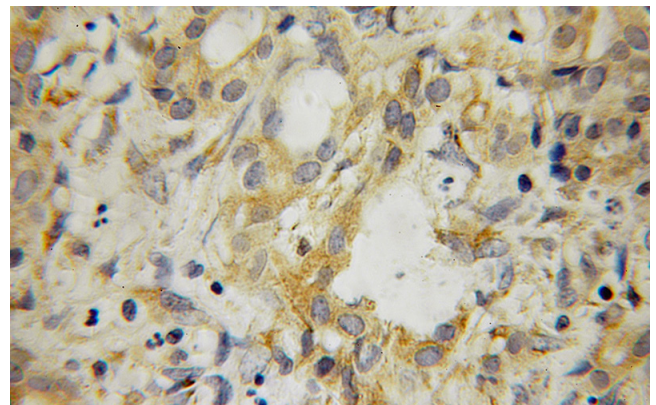
Dilutions

Recommended Dilution:

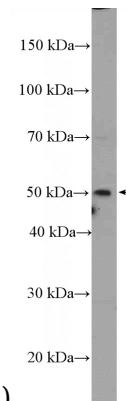
WB: 1:200-1:1000

IHC: 1:20-1:200

Validations



Immunohistochemical of paraffin-embedded human pancreas cancer using Catalog No:115584(SRFBP1 antibody) at dilution of 1:100



(under 10x lens)

mouse heart tissue were subjected to SDS PAGE followed by western blot with Catalog No:115584(SRFBP1 Antibody) at dilution of 1:300