

LDHB antibody



Catalog Number: 112184

Product name

LDHB antibody

Recommended Dilution:

WB: 1:1000-1:10000

Specificity

Human, Mouse, Rat; other species not tested.

IP: 1:500-1:5000

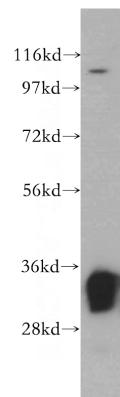
IHC: 1:20-1:200

Antibody description

LDHB Rabbit Polyclonal antibody. Positive IP detected in mouse brain tissue. Positive WB detected in mouse brain tissue, DU 145 cells, PC-3 cells, rat brain tissue, rat liver tissue. Positive FC detected in HeLa cells. Positive IHC detected in human prostate tissue. Positive IF detected in HeLa cells. Observed molecular weight by Western-blot: 35 kDa

IF: 1:20-1:200

Validations



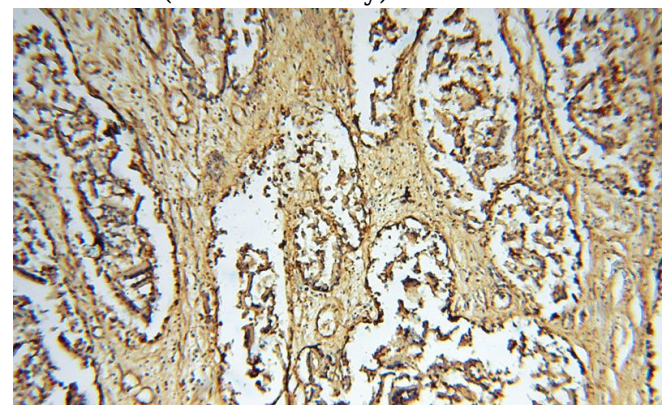
Preparation

This antibody was obtained by immunization of LDHB recombinant protein (Accession Number: NM_002300). Purification method: Antigen affinity purified.

mouse brain tissue were subjected to SDS PAGE followed by western blot with Catalog No:112184(LDHB antibody) at dilution of 1:2000

Formulation

PBS with 0.02% sodium azide and 50% glycerol pH 7.3.



Storage

Store at -20°C. DO NOT ALIQUOT

Clonality

Polyclonal

Ig Type

Rabbit IgG

Immunohistochemical of paraffin-embedded human prostate using Catalog No:112184(LDHB antibody) at dilution of 1:100 (under 10x lens)

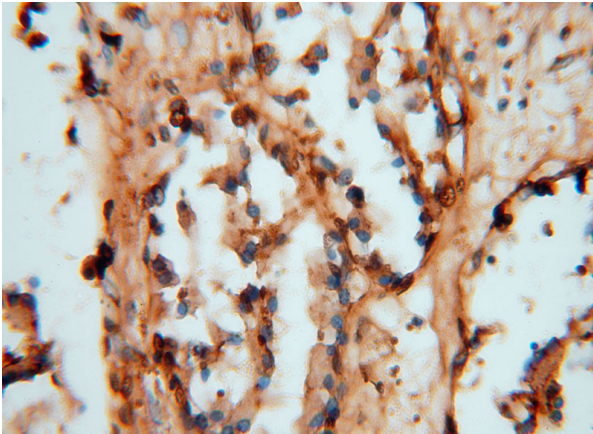
Applications

ELISA, WB, IHC, IF, FC, IP

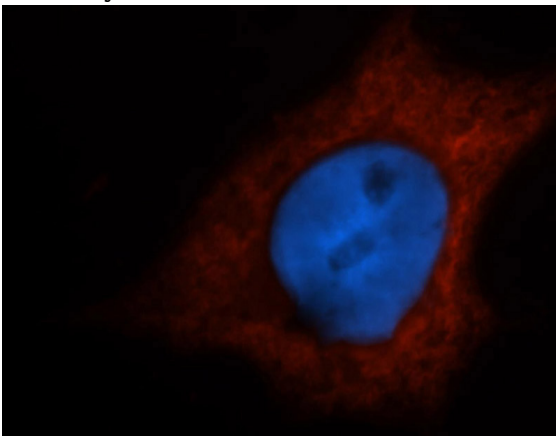
Dilutions

LDHB antibody

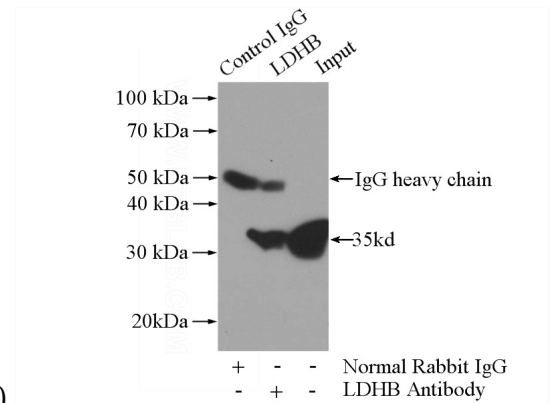
Catalog Number: 112184



Immunohistochemical of paraffin-embedded human prostate using Catalog No:112184(LDHB antibody) at dilution of 1:100 (under 40x lens)

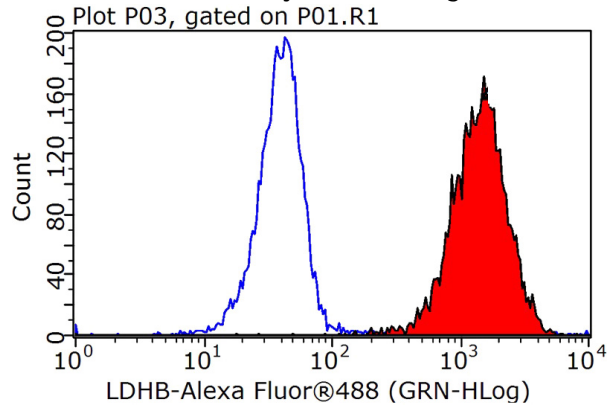


Immunofluorescent analysis of HeLa cells, using LDHB antibody Catalog No:112184 at 1:50 dilution and Rhodamine-labeled goat anti-rabbit IgG (red). Blue pseudocolor = DAPI (fluorescent



DNA dye).

IP Result of anti-LDHB (IP:Catalog No:112184, 3ug; Detection:Catalog No:112184 1:1000) with mouse brain tissue lysate 4000ug.



1X10⁶ HeLa cells were stained with 0.2ug LDHB antibody (Catalog No:112184, red) and control antibody (blue). Fixed with 90% MeOH blocked with 3% BSA (30 min). Alexa Fluor 488-conjugated AffiniPure Goat Anti-Rabbit IgG(H+L) with dilution 1:1000.