

Catalase antibody



Catalog Number: 108884

Product name

Catalase antibody

WB: 1:500-1:5000

IHC: 1:20-1:200

Specificity

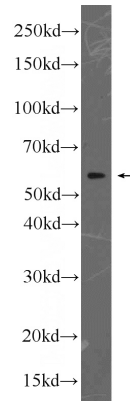
Human, Mouse, Rat; other species not tested.

IF: 1:10-1:100

Antibody description

Catalase Rabbit Polyclonal antibody. Positive WB detected in HeLa cells, HepG2 cells, HT-1080 cells, Jurkat cells, mouse liver tissue, Raji cells, rat liver tissue. Positive IF detected in HepG2 cells. Positive IHC detected in human hepatocirrhosis tissue. Observed molecular weight by Western-blot: 55-60kd

Validations



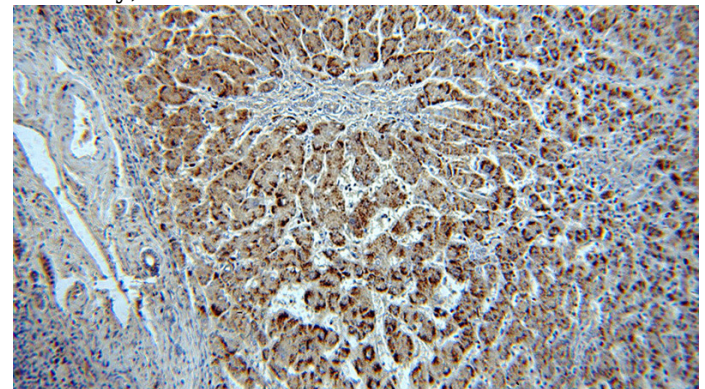
Preparation

This antibody was obtained by immunization of Catalase recombinant protein (Accession Number: NM_001752). Purification method: Antigen affinity purified.

HeLa cells were subjected to SDS PAGE followed by western blot with Catalog No:108884(CAT antibody) at dilution of 1:1000

Formulation

PBS with 0.02% sodium azide and 50% glycerol pH 7.3.



Storage

Store at -20°C. DO NOT ALIQUOT

Clonality

Polyclonal

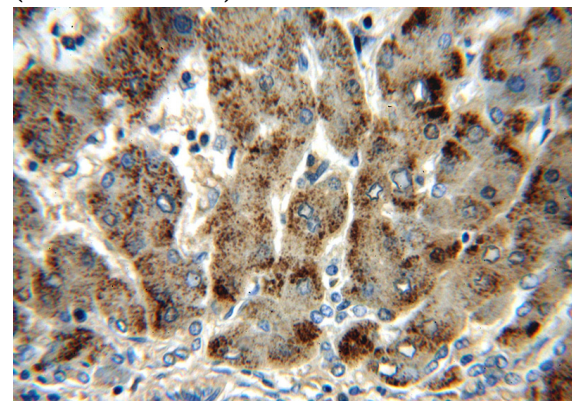
Immunohistochemical of paraffin-embedded human hepatocirrhosis using Catalog No:108884(CAT antibody) at dilution of 1:100 (under 10x lens)

Ig Type

Rabbit IgG

Applications

ELISA, IHC, WB, IF



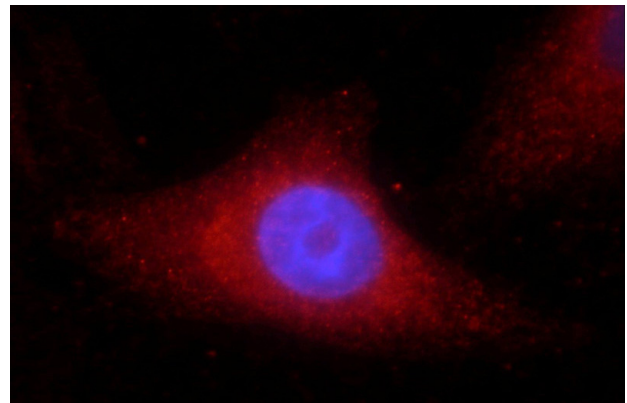
Dilutions

Recommended Dilution:

Catalase antibody

Catalog Number: 108884

Immunohistochemical of paraffin-embedded human hepatocirrhosis using Catalog No:108884(CAT antibody) at dilution of 1:100 (under 40x lens)



Immunofluorescent analysis of HepG2 cells using Catalog No:108884(Catalase Antibody) at dilution of 1:25 and Rhodamine-Goat anti-Rabbit IgG