

Anti-QK1 Rabbit antibody



Catalog Number: 168884

Product name

Rabbit IgG

Anti-QK1 Rabbit antibody

Applications

Specificity

WB, ICC/IF, IP

Human, Mouse, Rat

Dilutions

Antibody description

WB: 1/1000-1/5000

QK1 Rabbit monoclonal antibody

ICC/IF: 1/20-1/50

Preparation

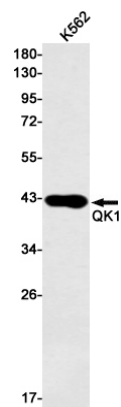
IP: 1/20-1/50

Antigen: A synthetic peptide of human QK1

Validations

Formulation

50nM Tris-Glycine(pH 7.4), 0.15M NaCl,
40%Glycerol, 0.01% sodium azide and 0.05% BSA.



Storage

Store at 4°C short term. Store at -20°C long term.
Avoid freeze / thaw cycle.

Western blot detection of QK1 in K562 cell lysates using QK1 Rabbit mAb(1:1000 diluted). Predicted band size:38kDa.Observed band size:38kDa.

Clonality

Monoclonal

Ig Type