

# Anti-Phospho-c-Jun (Ser243) Rabbit antibody



Catalog Number: 166884

## Product name

Anti-Phospho-c-Jun (Ser243) Rabbit antibody

## Specificity

Human, Mouse, Rat

## Antibody description

Phospho-c-Jun (Ser243) Rabbit polyclonal antibody

## Preparation

Antigen: Peptide sequence around phosphorylation site of serine 243 (P-L-S(p)-P-I) derived from Human c-Jun.

## Formulation

Supplied at 1.0mg/mL in phosphate buffered saline (without Mg<sup>2+</sup> and Ca<sup>2+</sup>), pH 7.4, 150mM NaCl, 0.02% sodium azide and 50% glycerol.

## Storage

Store at 4°C short term. Store at -20°C long term. Avoid freeze / thaw cycle.

## Clonality

Polyclonal

## Ig Type

Rabbit IgG

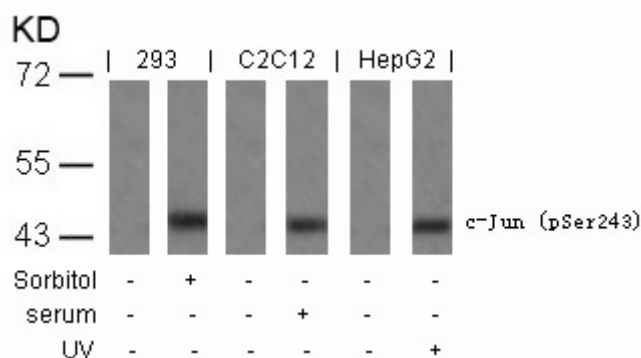
## Applications

WB, IHC-P

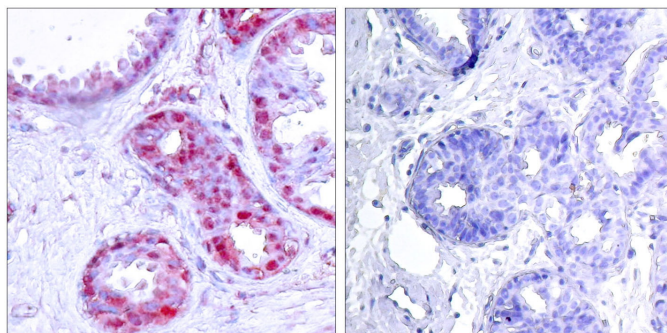
## Dilutions

WB:1/500-1/1000 IHC:1/50-1/100

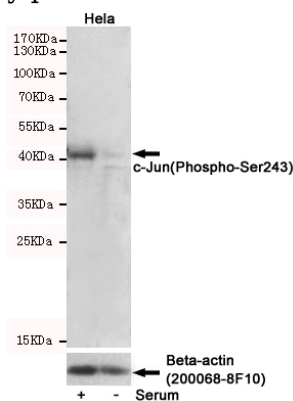
## Validations



Western blot analysis of extracts from sorbitol-treated 293, Serum-treated C2C12 and UV-treated HepG2 cells using c-Jun (Phospho-Ser243) Antibody .



Immunohistochemical analysis of paraffin-embedded human breast carcinoma tissue using c-Jun (Phospho-Ser243) Antibody (left) or the same antibody preincubated with blocking peptide (right).



Western blot detection of c-Jun(Phospho-Ser243) in HeLa cells untreated or serum-treated, using c-Jun(Phospho-Ser243) Rabbit pAb (dilution 1:500, upper) or u03b2-Actin Mouse mAb (200068-8F10, lower). Predicted band size:43kDa. Observed band size:43kDa.