

Human Carboxypeptidase A1/CPA1 (His Tag) recombinant protein



Catalog Number: 500884

General Information

Protein Construction

A DNA sequence encoding the human CPA1 precursor (NP_001859.1) (Met 1-Tyr 419) was expressed with a C-terminal polyhistidine tag.

Organism

Human

Expression Host

Human Cells

QC Testing

Activity

Measured by its ability to cleave the colorimetric peptide substrate Ac-Phe-Thiaphe-OH in the presence of 5,5'-Dithiobis (2-nitrobenzoic acid) (DTNB). The specific activity is >3,500 pmoles/min/ μ g.

Purity

> 97 % as determined by SDS-PAGE

Endotoxin

< 1.0 EU per μ g of the protein as determined by the LAL method

Stability

Samples are stable for up to twelve months from date of receipt at -70°C

Predicted N terminal

Lys 17

Molecular Mass

The secreted recombinant human CPA1 (pro form) consists of 414 amino acids and has a predicted molecular mass of 47 kDa. In SDS-PAGE under reducing conditions, it migrates with the apparent molecular mass of 43 kDa.

Formulation

Lyophilized from sterile PBS, pH 7.4

1. 5 % trehalose and mannitol are added as protectants before lyophilization.

2. Please contact us for any concerns or special requirements.

Usage Guide

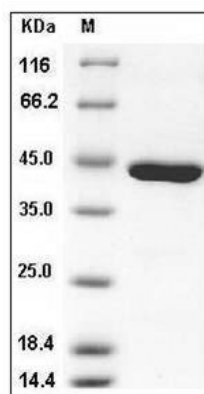
Storage

Store it under sterile conditions at -20°C to -80°C. It is recommended that the protein be aliquoted for optimal storage. Avoid repeated freeze-thaw cycles.

Reconstitution

Adding sterile water, prepare a stock solution of 0.25 mg/ml. Concentration is measured by UV-Vis.

SDS-PAGE



Human Carboxypeptidase A1 / CPA1 Protein (His Tag) SDS-PAGE