

PAF1 antibody

Catalog Number: 113484

Product name

PAF1 antibody

IP: 1:500-1:5000

IHC: 1:20-1:200

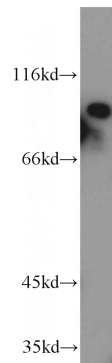
Specificity

Human; other species not tested.

Validations

Antibody description

PAF1 Rabbit Polyclonal antibody. Positive WB detected in HepG2 cells, HeLa cells. Positive IP detected in HeLa cells. Positive IHC detected in human ovary tumor tissue. Observed molecular weight by Western-blot: 80 kDa



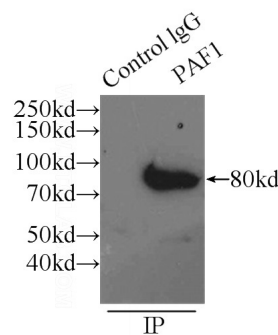
Preparation

This antibody was obtained by immunization of PAF1 recombinant protein (Accession Number: NM_019088). Purification method: Antigen affinity purified.

HepG2 cells were subjected to SDS PAGE followed by western blot with Catalog No:113484(PAF1 antibody) at dilution of 1:1000

Formulation

PBS with 0.02% sodium azide and 50% glycerol pH 7.3.



Storage

Store at -20°C. DO NOT ALIQUOT

Clonality

Polyclonal

Ig Type

Rabbit IgG

Applications

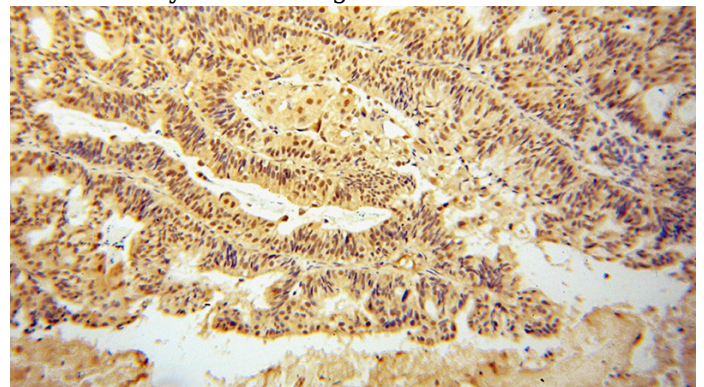
ELISA, WB, IHC, IP

Dilutions

Recommended Dilution:

WB: 1:500-1:5000

IP Result of anti-PAF1 (IP:Catalog No:113484, 3ug; Detection:Catalog No:113484 1:1000) with HeLa cells lysate 3000ug.

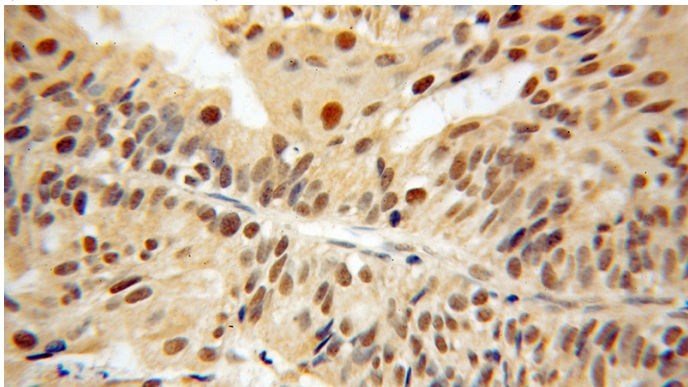


Immunohistochemical of paraffin-embedded human ovary tumor using Catalog

PAF1 antibody

Catalog Number: 113484

No:113484(PAF1 antibody) at dilution of 1:100
(under 10x lens)



Immunohistochemical of paraffin-embedded
human ovary tumor using Catalog
No:113484(PAF1 antibody) at dilution of 1:100
(under 40x lens)