

# DEPDC6 Polyclonal Antibody



Catalog Number: 163484

## Product name

DEPDC6 Polyclonal Antibody

## Specificity

Human, Mouse, Rat

## Antibody description

Polyclonal antibody to DEPDC6

## Preparation

Antigen: Recombinant fusion protein containing a sequence corresponding to amino acids 1-220 of human DEPDC6 (NP\_073620.2).

## Formulation

PBS with 0.02% sodium azide, 50% glycerol, pH7.3.

## Storage

Store at -20°C. Avoid freeze / thaw cycles.

## Clonality

Polyclonal

## Ig Type

Rabbit IgG

## Applications

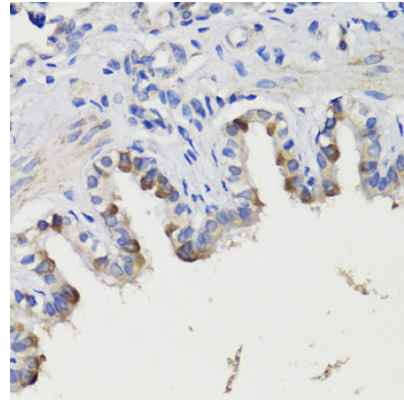
WB, IHC

## Dilutions

WB 1:500 - 1:2000

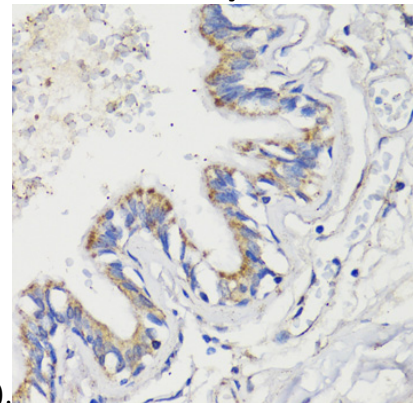
IHC 1:50 - 1:100

## Validations



Immunohistochemistry - DEPDC6 Polyclonal Antibody

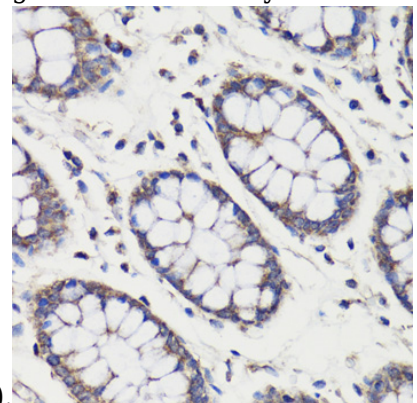
Immunohistochemistry of paraffin-embedded rat bronchus using DEPDC6 antibody at dilution of



1:200 (40x lens).

Immunohistochemistry - DEPDC6 Polyclonal Antibody

Immunohistochemistry of paraffin-embedded human lung using DEPDC6 antibody at dilution of



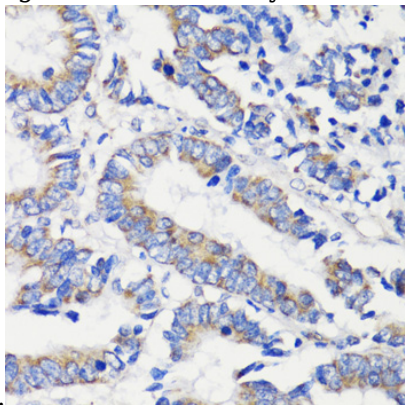
1:200 (40x lens).

Immunohistochemistry - DEPDC6 Polyclonal Antibody

# DEPDC6 Polyclonal Antibody

Catalog Number: 163484

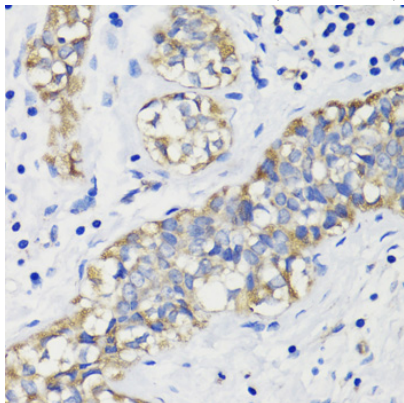
Immunohistochemistry of paraffin-embedded human colon using DEPDC6 antibody at dilution of



1:200 (40x lens).

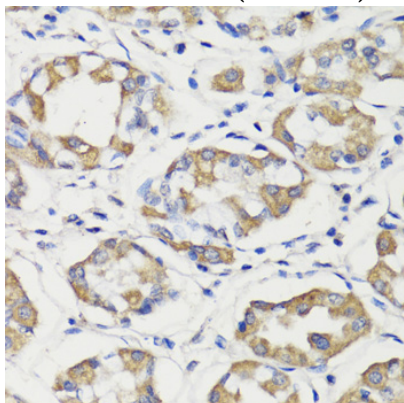
Immunohistochemistry - DEPDC6 Polyclonal Antibody

Immunohistochemistry of paraffin-embedded human colon carcinoma using DEPDC6 antibody at dilution of 1:200 (40x lens).



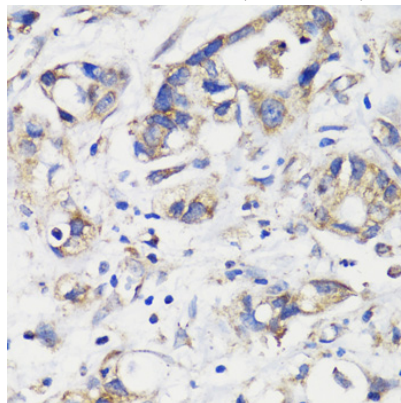
Immunohistochemistry - DEPDC6 Polyclonal Antibody

Immunohistochemistry of paraffin-embedded human breast cancer using DEPDC6 antibody at dilution of 1:200 (40x lens).



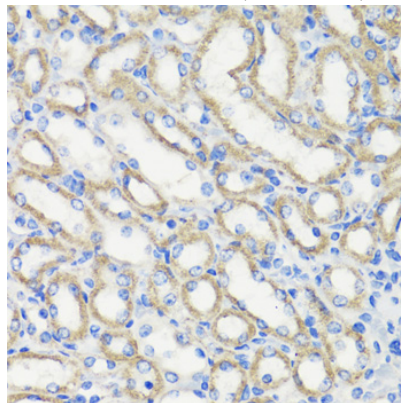
Immunohistochemistry - DEPDC6 Polyclonal Antibody

Immunohistochemistry of paraffin-embedded human stomach using DEPDC6 antibody at dilution of 1:200 (40x lens).



Immunohistochemistry - DEPDC6 Polyclonal Antibody

Immunohistochemistry of paraffin-embedded human gastric cancer using DEPDC6 antibody at dilution of 1:200 (40x lens).



Immunohistochemistry - DEPDC6 Polyclonal Antibody

Immunohistochemistry of paraffin-embedded mouse kidney using DEPDC6 antibody at dilution of 1:200 (40x lens).