

Human LCP2 (His tag) recombinant protein



Catalog Number: 518084

General Information

Gene Name Synonym

Lymphocyte cytosolic protein 2, SH2 domain-containing leukocyte protein of 76 kDa, SLP-76 tyrosine phosphoprotein, SLP76, LCP2

Protein Construction

A DNA sequence encoding the Human LCP2 Met1-Pro533 is expressed with a T7 tag at the N-terminus, 6His tag at the C-terminus.

Organism

Human

Expression Host

E. coli

QC Testing

Purity

>95% as determined by SDS-PAGE.

Endotoxin

<1.0 EU per µg protein as determined by the LAL

method.

Stability

Store for up to 6 months at -20°C

Formulation

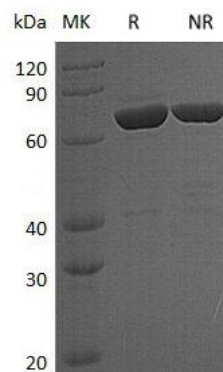
Supplied as a 0.2 µm filtered solution of 20mM Tris, 150mM NaCl, 20% glycerol, pH 8.5.

Usage Guide

Storage

Store at <-20°C, minimize freeze-thaw cycles.

SDS-PAGE



Human LCP2 (His tag) recombinant protein