

Human PPM1A/PP2CA (His Tag) recombinant protein



Catalog Number: 503084

General Information

Gene Name Synonym

Protein phosphatase 2C isoform alpha; Protein phosphatase IA

Protein Construction

A DNA sequence encoding the human PPM1A isoform alpha-1 (P35813-1) (Met 1-Trp 382) was fused with a polyhistidine tag at the C-terminus.

Organism

Human

Expression Host

E. coli

QC Testing

Purity

> 85 % as determined by SDS-PAGE

Endotoxin

Please contact us for more information.

Stability

Samples are stable for up to twelve months from date of receipt at -70°C

Predicted N terminal

Met 1

Molecular Mass

The recombinant human PPM1A consisting of 392

amino acids and has a calculated molecular mass of 43.8 kDa. It migrates as an approximately 47 kDa band in SDS-PAGE under reducing conditions.

Formulation

Lyophilized from sterile PBS, 10% glycerol, pH 7.5
1. 5 % trehalose and mannitol are added as protectants before lyophilization.

2. Please contact us for any concerns or special requirements.

Usage Guide

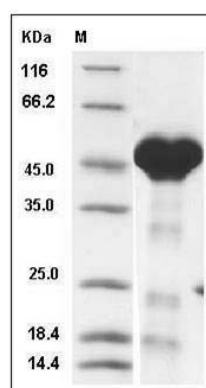
Storage

Store it under sterile conditions at -20°C to -80°C. It is recommended that the protein be aliquoted for optimal storage. Avoid repeated freeze-thaw cycles.

Reconstitution

Adding sterile water, prepare a stock solution of 0.25 mg/ml. Concentration is measured by UV-Vis.

SDS-PAGE



Human PPM1A / PP2CA / PP2C-alpha Protein (His Tag) SDS-PAGE